

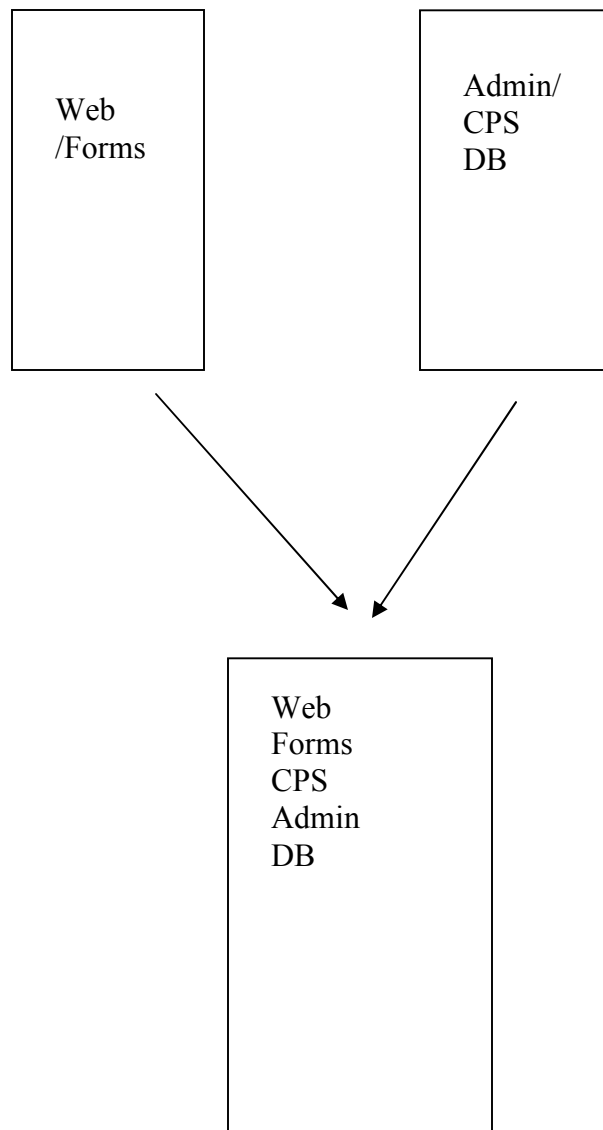
Author – *A.Kishore*
<http://appsdba.info>

Two Node to Single Node

Two Node to Single Node is a interesting concept, if the db and application is separate then Two Node to Single Node is very simple, you copy db first and application second. In the below example where application tier is present in both the nodes then it becomes challenging. Most of companies need it, their production environment is very complex but they cannot give the same in the development for patches and testing purposes. I have seen an environment where they have 4 node E-business system running on RAC but they have single node for patching, testing etc.

This configuration is not supported by Oracle but has been tested in our environment, unless tested properly don't apply in production; this site is not responsible for any data loss.

Figure says, what is the environment and what is required



Author – *A.Kishore*
<http://appsdba.info>

Here are the steps.

- 1> DB,cps, admin on one node
- 2> Web and forms on second node
- 3> Run preclone on second node - WEB/FORMS
- 4> Update snapshot on both nodes, web first (optional)
- 5> copy visappl/viscomn/visora to the first node (db node) in new directory
- 6> Remove viscomn/visora in the first node (db node)
- 7> Merge appltop
 scp -rp visappl/* /d01/oracle/visappl (no prompt)
- 8> cp viscomn/visora to /d01/oracle/
- 9> Run Postclone on the DB node (application tier)
- 10> Open application xml file and change all parameters "Yes"
 <TIER_DB oa_var="s_isDB">YES</TIER_DB>
 <TIER_ADMIN oa_var="s_isAdmin">YES</TIER_ADMIN>
 <TIER_WEB oa_var="s_isWeb">YES</TIER_WEB>
 <TIER_FORMS oa_var="s_isForms">YES</TIER_FORMS>
 <TIER_NODE oa_var="s_isConc">YES</TIER_NODE>
 <TIER_FORMSDEV oa_var="s_isFormsDev">YES</TIER_FORMSDEV>
 <TIER_NODEDEV oa_var="s_isConcDev">YES</TIER_NODEDEV>
 <TIER_WEBDEV oa_var="s_isWebDev">YES</TIER_WEBDEV>

 <TIER_ADADMIN oa_var="s_isAdAdmin">YES</TIER_ADADMIN>
 <TIER_ADNODE oa_var="s_isAdConc">YES</TIER_ADNODE>
 <TIER_ADNODEDEV oa_var="s_isAdConcDev">YES</TIER_ADNODEDEV>

 <oa_process_status oa_var="s_apcstatus">enabled</oa_process_status>
 <oa_process_status oa_var="s_concstatus">enabled</oa_process_status>
- 11> Run AutoConfig