

Author – *A.Kishore*  
<http://www.appsdba.info>

## Install VMWARE on Linux (OEL 4 update5)

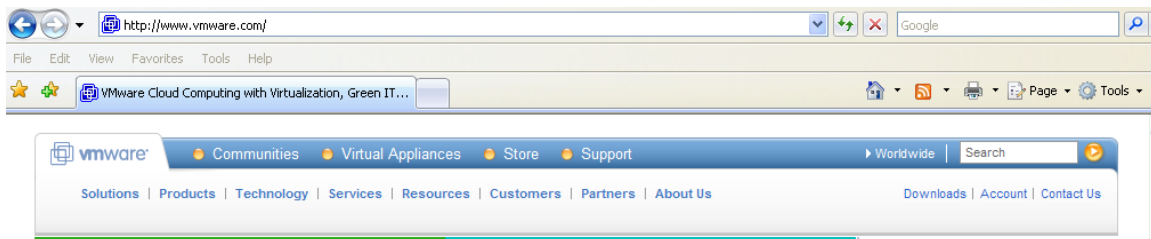
VM Server version is free where workstation works for a month.

The host machine can be Windows XP/Vista or Linux.

The first step is to Install VMWARE on linux or windows. Here are the steps

### Download and Install VMWARE 1.0.3 on Linux

<http://www.vmware.com>



Click downloads

#### **VMware Server**

[Free Download](#)

Includes Drivers & Tools and Open Source

[Archives for VMware GSX Server](#)

[Add-on Management for VMware Server](#) (Includes VMware VirtualCenter for VMware Server)

Go to VMware Server and click Free Download

#### **VMware Server 1.0.3**

Version: 1.0.3 | 2007/04/26 | Build: 44356

[Download](#) | [Release Notes](#)

I am using VMware Server 1.0.3 version for the Installation

Author – A.Kishore  
<http://www.appsdba.info>

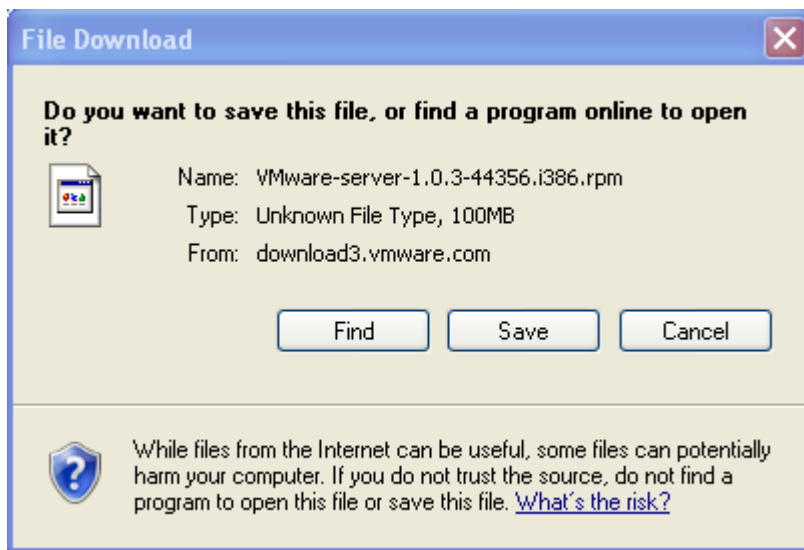
## Download VMware Server (for Windows and Linux systems)

Latest Version: 1.0.3 | 4/26/07 | Build 44356

[Register](#) for your free serial number(s) to start using VMware Server.

Learn about [VMware Server Support Offerings](#) and how to purchase Gold and Platinum Support and Subscription.

<b>VMware Server for Linux</b> As above, but a RPM Binary.	<a href="#">Binary (.rpm)</a> (md5sum:23c45a8552376d8d7c0546ac37b964ed)
---	--



Copy the VMware-server-1.0.3-44356.i385.rpm to the your Linux Server

Install the package

```
- rpm -Uvh VMware-server-1.0.3-44356.i385.rpm
```

```
[root@erp vmware]# rpm -Uvh VMware-server-1.0.3-44356.i386.rpm
Preparing...                               ##### [100%]
 1:VMware-server                           ##### [100%]
```

To configure VMWARE and to start it

```
vmware-config.pl
/usr/bin/vmware
```

To uninstall VMWARE

```
rpm -e VMware-server-1.0.3-44356.i386.rpm
vmware-uninstall.pl
```

Author – A.Kishore  
<http://www.appsdba.info>

Let's configure VMWARE

vmware-config.pl

```
[root@erp vmware]# vmware-config.pl
Making sure services for VMware Server are stopped.

Stopping VMware services:
  Virtual machine monitor          [ OK ]

You must read and accept the End User License Agreement to continue.
Press enter to display it. [ ]
```

```
Do you accept? (yes/no) yes
Thank you.
Configuring fallback GTK+ 2.4 libraries.
In which directory do you want to install the mime type icons?
[/usr/share/icons]
What directory contains your desktop menu entry files? These files have a
.desktop file extension. [/usr/share/applications]
In which directory do you want to install the application's icon?
[/usr/share/pixmaps]
Trying to find a suitable vmmon module for your running kernel.
The module bld-2.6.9-11.EL-i686smp-RHEL4 loads perfectly in the running kernel.
Do you want networking for your virtual machines? (yes/no/help) [yes]
Configuring a bridged network for vmnet0.
Your computer has multiple ethernet network interfaces available: eth0, eth1.
Which one do you want to bridge to vmnet0? [eth0] [ ]
```

Author – *A.Kishore*  
<http://www.appsdba.info>

```
The following bridged networks have been defined:

. vmnet0 is bridged to eth0

Do you wish to configure another bridged network? (yes/no) [no]

Do you want to be able to use NAT networking in your virtual machines? (yes/no)
[yes] no

Do you want to be able to use host-only networking in your virtual machines?
[no]

Trying to find a suitable vmnet module for your running kernel.

The module bld-2.6.9-11.EL-i686smp-RHEL4 loads perfectly in the running kernel.

Please specify a port for remote console connections to use [902] 

Stopping xinetd: [ OK ]
Starting xinetd: [ OK ]
Configuring the VMware VmPerl Scripting API.

Building the VMware VmPerl Scripting API.

Using compiler "/usr/bin/gcc". Use environment variable CC to override.

Unable to compile the VMware VmPerl Scripting API.

*****
The VMware VmPerl Scripting API was not installed. Errors encountered during
compilation and installation of the module can be found here:
/tmp/vmware-config0

You will not be able to use the "vmware-cmd" program.

Errors can be found in the log file:
'/tmp/vmware-config0/control-only/make.log'
*****

Hit enter to continue. 

Generating SSL Server Certificate

In which directory do you want to keep your virtual machine files?
[/var/lib/vmware/Virtual Machines]

The path "/var/lib/vmware/Virtual Machines" does not exist currently. This
program is going to create it, including needed parent directories. Is this
what you want? [yes]

Please enter your 20-character serial number.
```

Type in the new serial number which you received

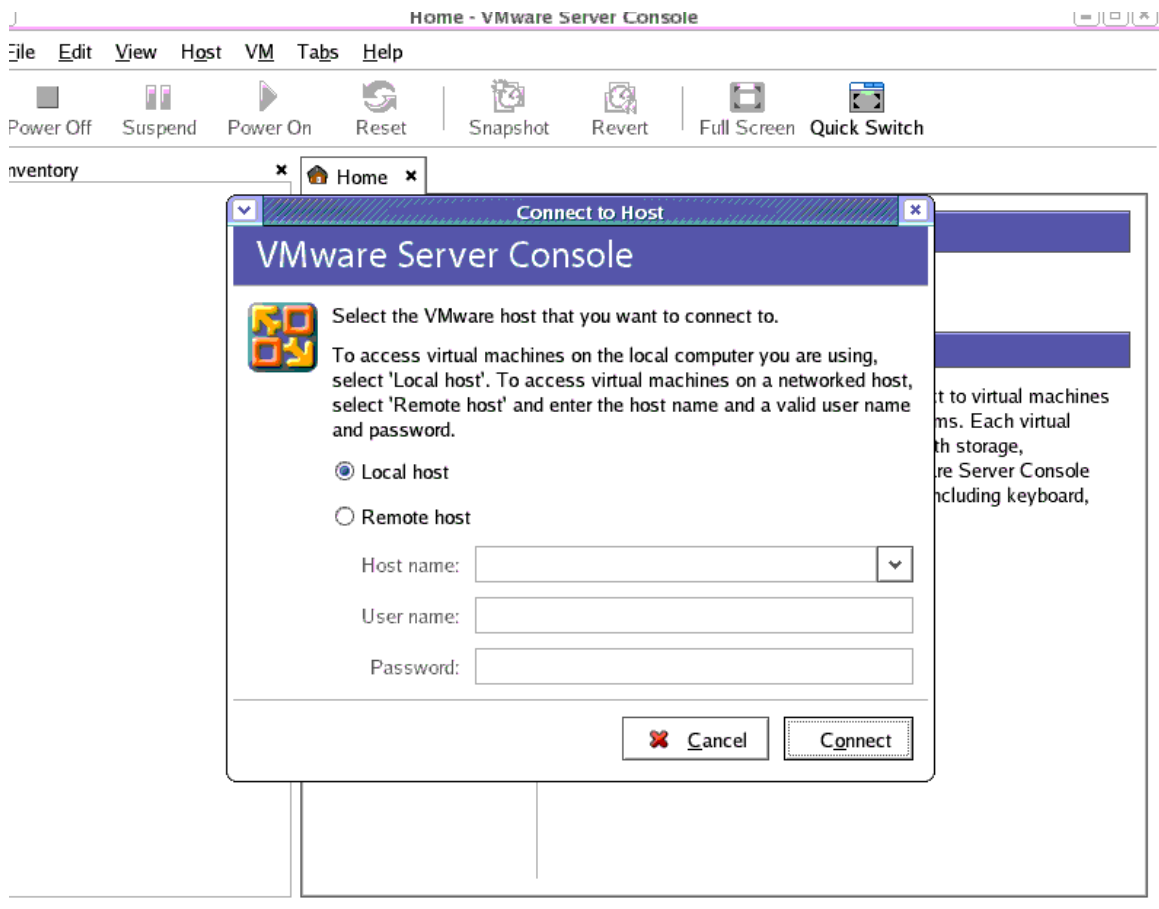
```
Starting VMware services:
  Virtual machine monitor [ OK ]
  Virtual ethernet [ OK ]
  Bridged networking on /dev/vmnet0 [ OK ]

The configuration of VMware Server 1.0.3 build-44356 for Linux for this running
kernel completed successfully.
```

Author – A.Kishore  
<http://www.appsdba.info>

## Start VMWARE

/usr/bin/vmware



Click Connect

Author – *A.Kishore*  
<http://www.appsdba.info>

The screenshot shows a web browser window with the address bar displaying 'erp.com'. The main content area is titled 'erp.com' and contains the following information:

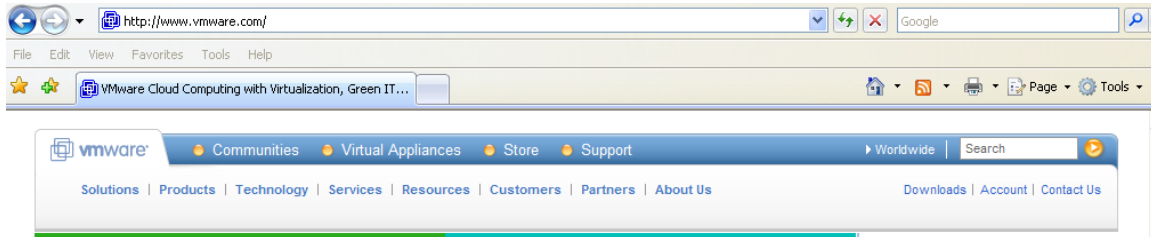
- State:** Connected
- Version:** VMware Server 1.0.3

Below this information are two panels:

- Commands:** A list of four buttons: 'Create a new virtual machine', 'Open a virtual machine', 'Edit host settings', and 'Switch to a different host'.
- Help:** A text block stating: 'The VMware Server Console lets you connect to virtual machines that run on VMware Server and GSX 3 systems. Each virtual machine is equivalent to a physical server with storage, networking, memory and devices. The VMware Server Console gives you full control over virtual machines, including keyboard, video and mouse interactivity.'

Author – *A.Kishore*  
<http://www.appsdba.info>

## Download and Install VMWARE on windows from www.vmware.com



Click downloads

### VMware Server

[Free Download](#)

Includes Drivers & Tools and Open Source

[Archives for VMware GSX Server](#)

[Add-on Management for VMware Server](#) (Includes VMware VirtualCenter for VMware Server)

Go to VMware Server and click Free Download

### VMware Server 1.0.3

Version: 1.0.3 | 2007/04/26 | Build: 44356

[Download](#) | [Release Notes](#)

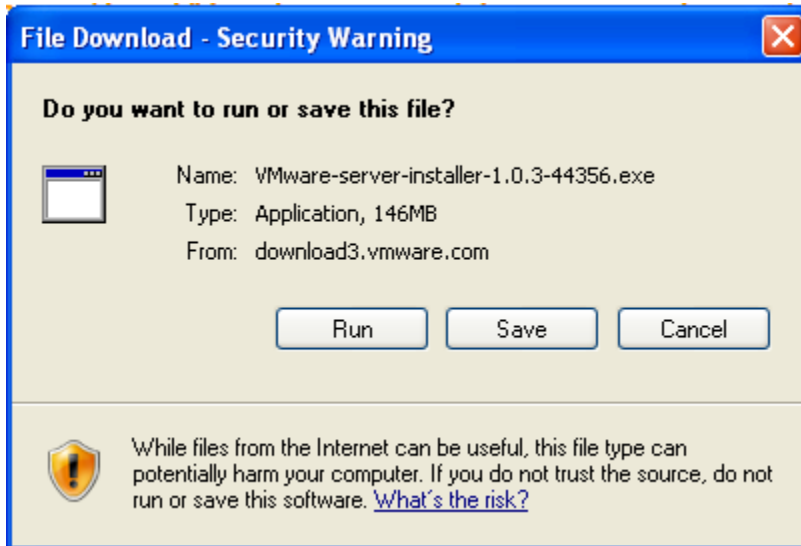
I am using VMware Server 1.0.3 version for the Installation

**VMware Server for Windows Operating Systems** [Download](#)  
File type: .exe  
MD5SUM: f85f10225400da8313e46db2da5db5ab  
English  
Windows 32-bit, Windows 64-bit

### Download VMware Server (for Windows Systems)

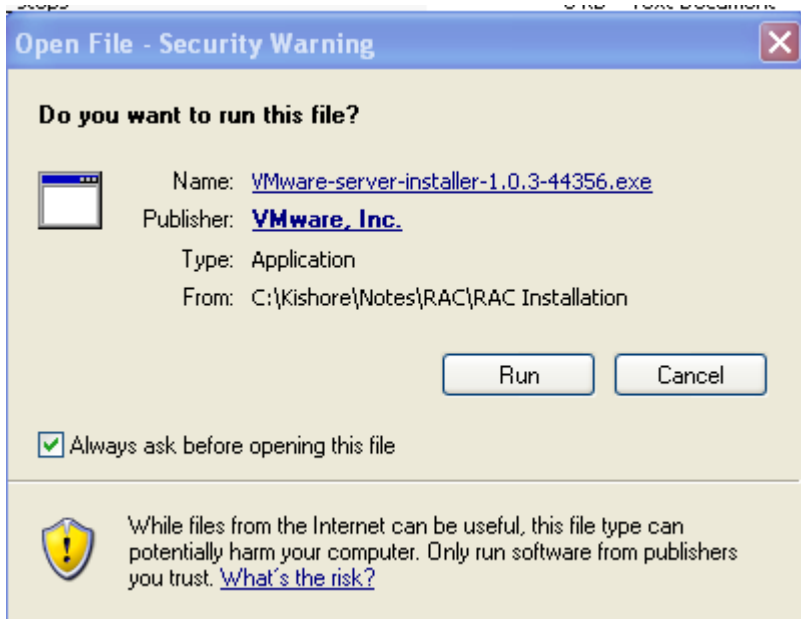
<b>VMware Server for Windows Operating Systems.</b> A master installer file containing all Windows components of VMware Server.	<a href="#">Binary (.exe)</a> (md5sum:f85f10225400da8313e46db2da5db5ab)
<b>VMware Server Windows client package.</b> A zip package containing installer files for the following VMware Server Windows Client components: <ul style="list-style-type: none"><li>- Windows VMware Server Console (.exe)</li><li>- COM scripting API for Windows (.exe)</li><li>- Perl scripting API for Windows (.exe)</li><li>- Programming API (.exe)</li></ul>	<a href="#">Binary (.zip)</a> (md5sum:d003f5b4a90ab1d9dffe484b497b756d)

Author – *A.Kishore*  
<http://www.appsdba.info>



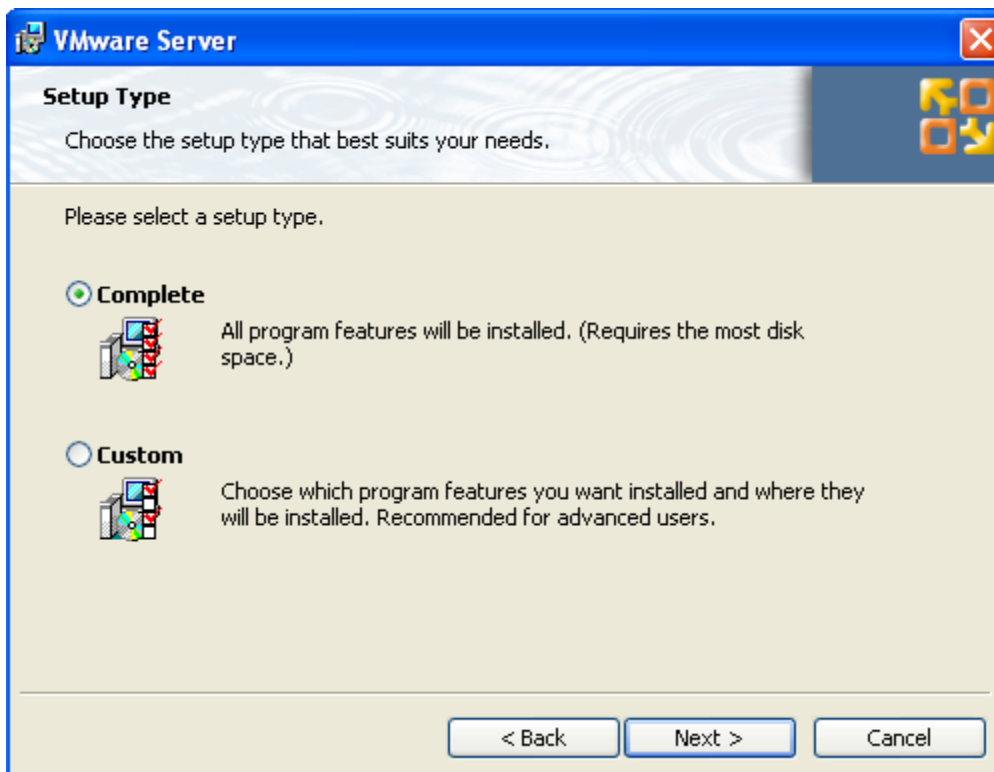
Download the windows version of VMWARE

Install vmware on windows

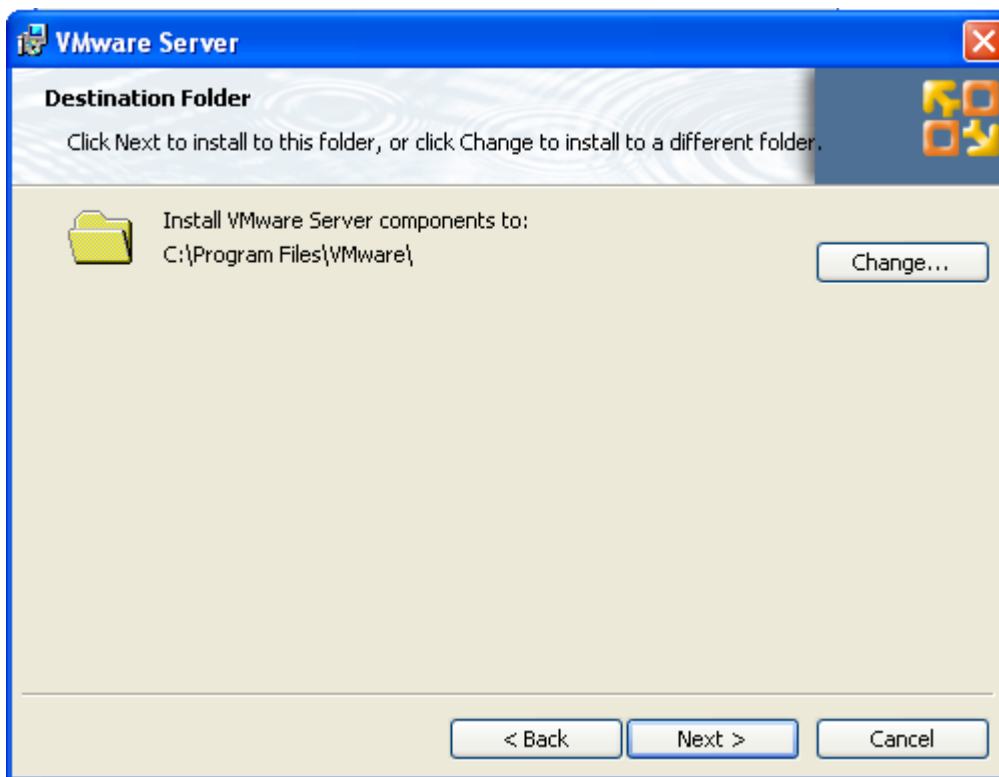
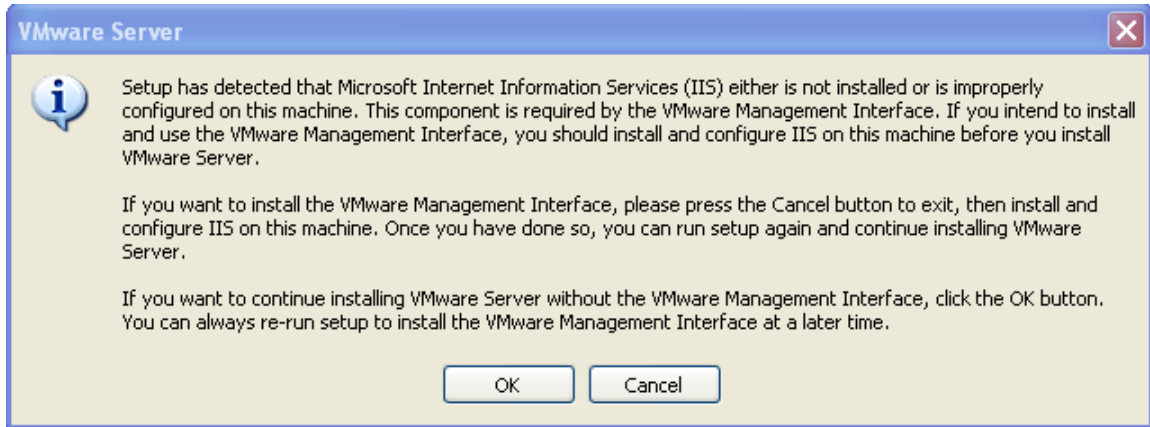




Author – A.Kishore  
<http://www.appsdba.info>



Author – A.Kishore  
<http://www.appsdba.info>



Author – A.Kishore  
<http://www.appsdba.info>

