

Author – *A.Kishore*  
<http://www.appsdba.info>

## Multi Node Installation on Oracle Apps R12 – Non Shared Application Tier

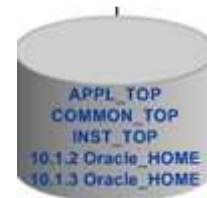
On linux1 – Database Server, Concurrent Processing Server

On linux2 – Web Services, Form Services

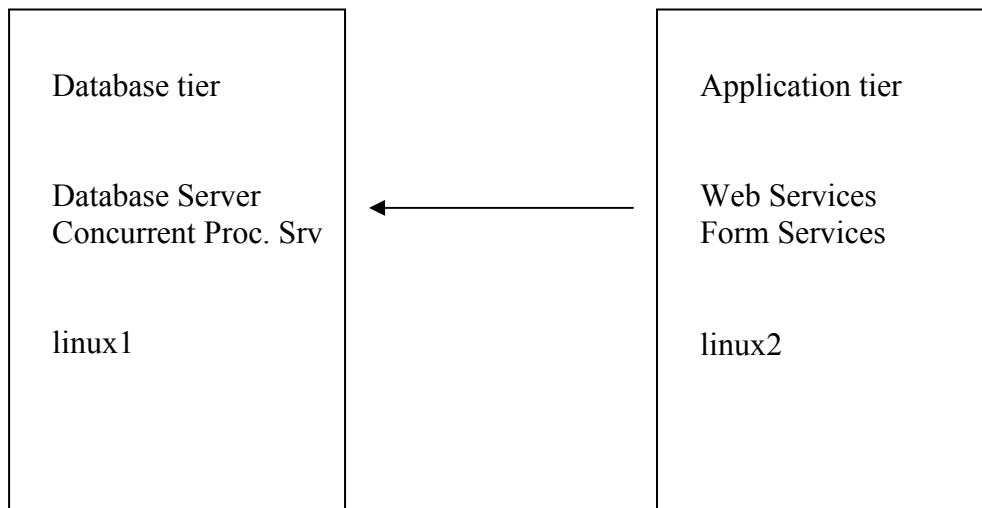
Assumptions:

- 1> Install Red Hat 4 Operating System on both the server  
Refer - [http://www.appsdba.info/docs/oracle\\_apps/Installation/rh4.pdf](http://www.appsdba.info/docs/oracle_apps/Installation/rh4.pdf)
- 2> Pre-install tasks are completed on the both the servers  
Refer - [http://www.appsdba.info/docs/oracle\\_apps/Installation/R12/snir12-ln.pdf](http://www.appsdba.info/docs/oracle_apps/Installation/R12/snir12-ln.pdf)

In Non Shared Application Tier system, both the nodes will have Application tier components –



+ 10.2.0.3 Oracle\_Home

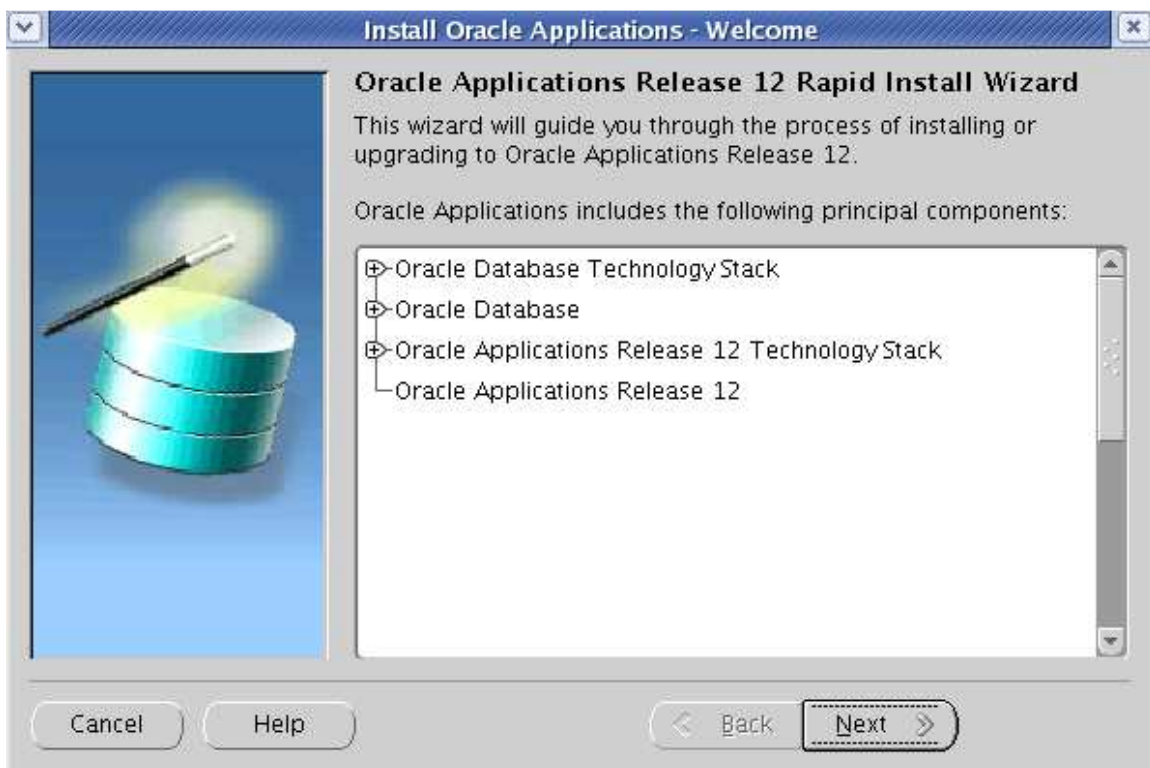


Author – *A.Kishore*  
<http://www.appsdba.info>

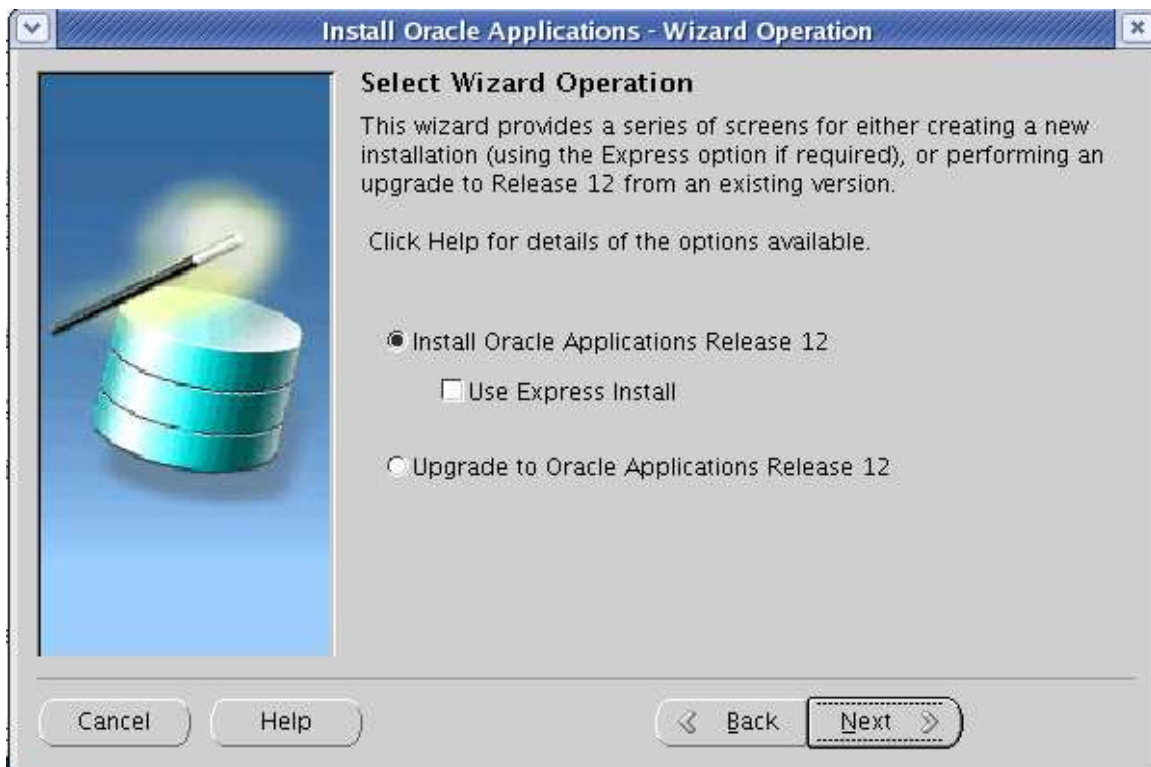
On linux1.

```
groupadd dba  
useradd oratest -g dba
```

Run Rapidwiz  
./rapidwiz




Author – A.Kishore  
<http://www.appsdba.info>



Author – A.Kishore  
<http://www.appsdba.info>

**Install Oracle Applications - Global System Settings**



### Global System Settings


The Port Pool mechanism is used to specify a set of port values for an Applications system. Each pool uses a unique set of values, allowing multiple environments to co-exist on the same host. Individual port values can be changed using the Edit Ports button.

Port Pool:

Derived Port Settings:

Database Port	<input type="text" value="1522"/>
RPC Port	<input type="text" value="1627"/>
Web SSL Port	<input type="text" value="4444"/>
ONS Local Port	<input type="text" value="6101"/>

**Install Oracle Applications - Database Node**



### Database Node Configuration

Use the Edit Paths button to see file system details.

Database Type:

Database SID:

Host Name:

Domain Name:

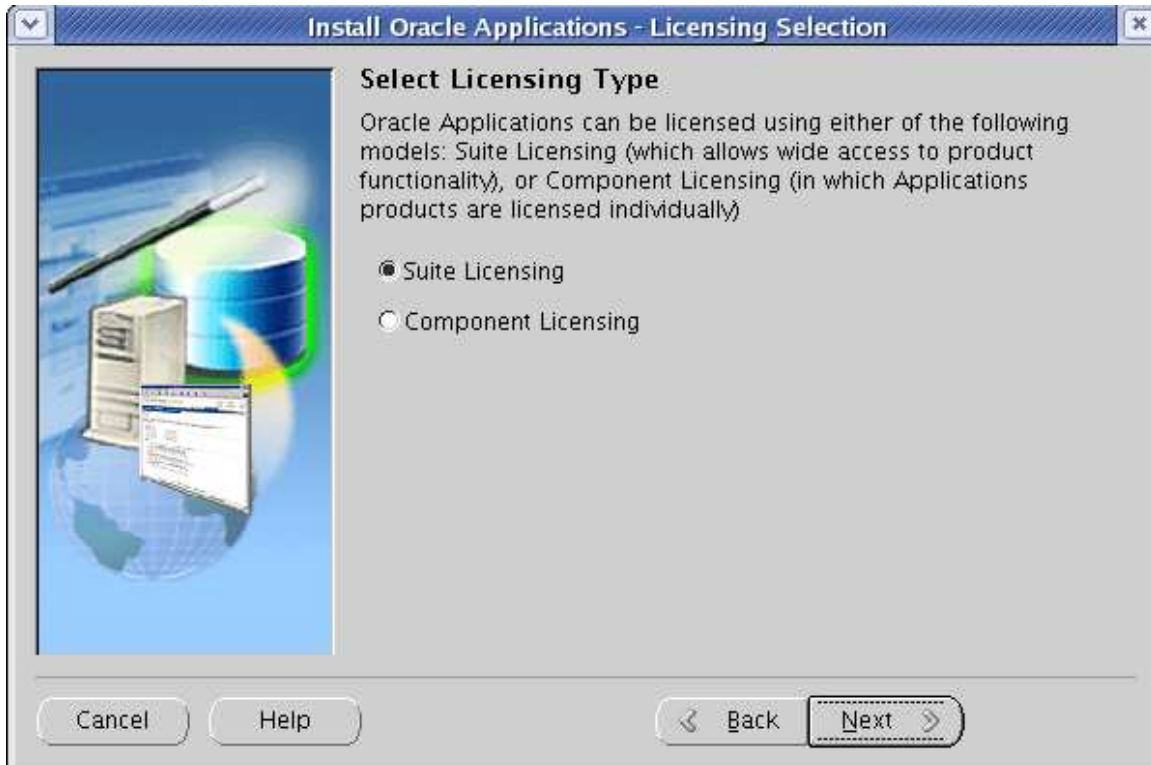
Operating System:

Database OS User:

Database OS Group:

Base directory:

Author – *A.Kishore*  
<http://www.appsdba.info>



Author – *A.Kishore*  
<http://www.appsdba.info>

**Install Oracle Applications - Primary Applications Node**

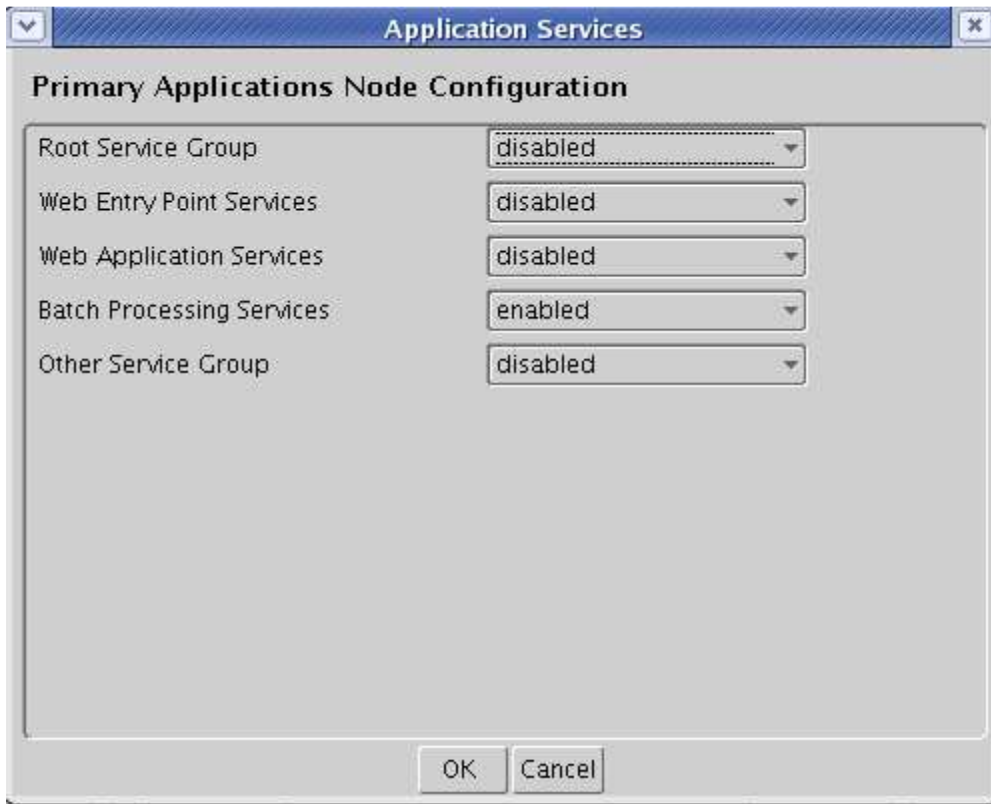
**Primary Applications Node Configuration**

Use the edit buttons to see configuration details.

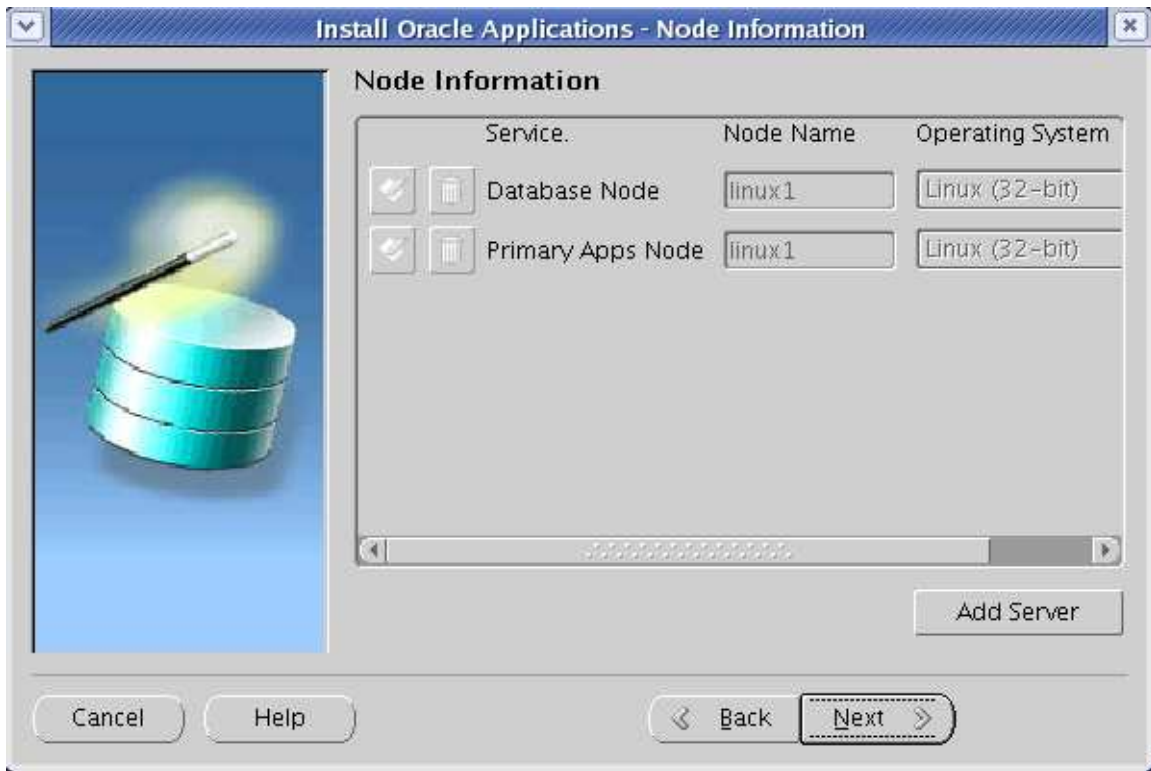
Host Name	<input type="text" value="linux1"/>
Domain Name	<input type="text" value="com"/>
Operating System	<input type="text" value="Linux (32-bit)"/>
Apps OS User	<input type="text" value="apptest"/>
Apps OS Group	<input type="text" value="dba"/>
Base directory	<input type="text" value="/d01/oracle/TEST"/> <input type="button" value="Browse"/>
Instance directory	<input type="text" value="/d01/oracle/TEST/inst"/> <input type="button" value="Browse"/>



Author – *A.Kishore*  
<http://www.appsdba.info>



Author – *A.Kishore*  
<http://www.appsdba.info>



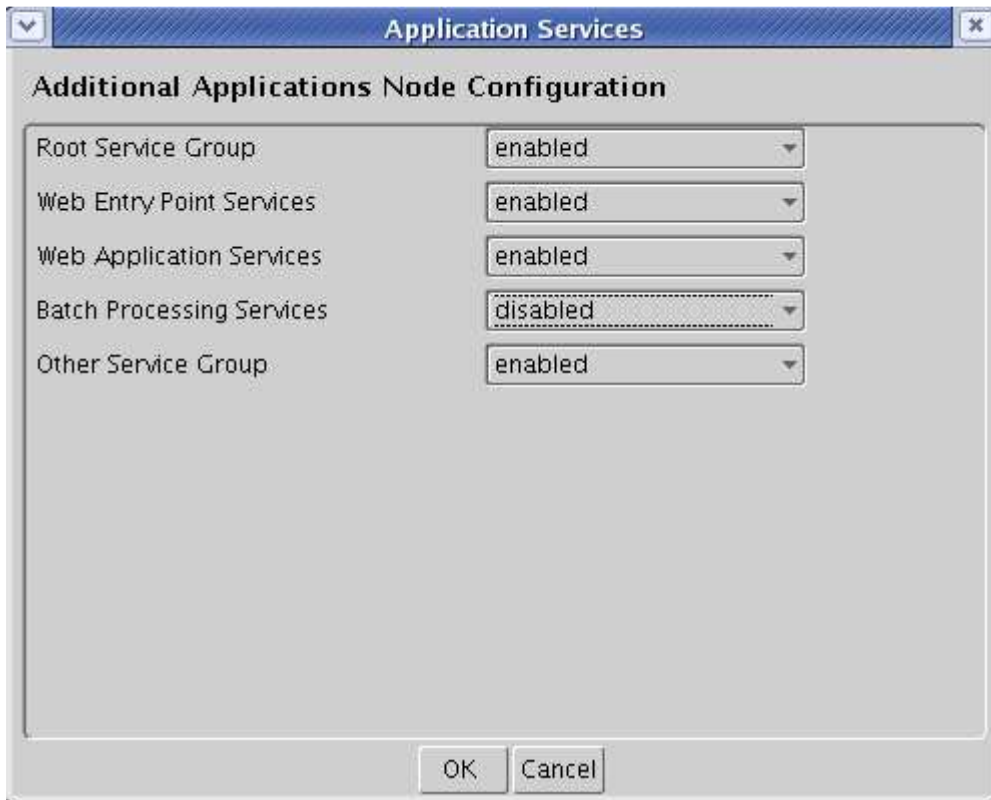


Author – *A.Kishore*  
<http://www.appsdba.info>

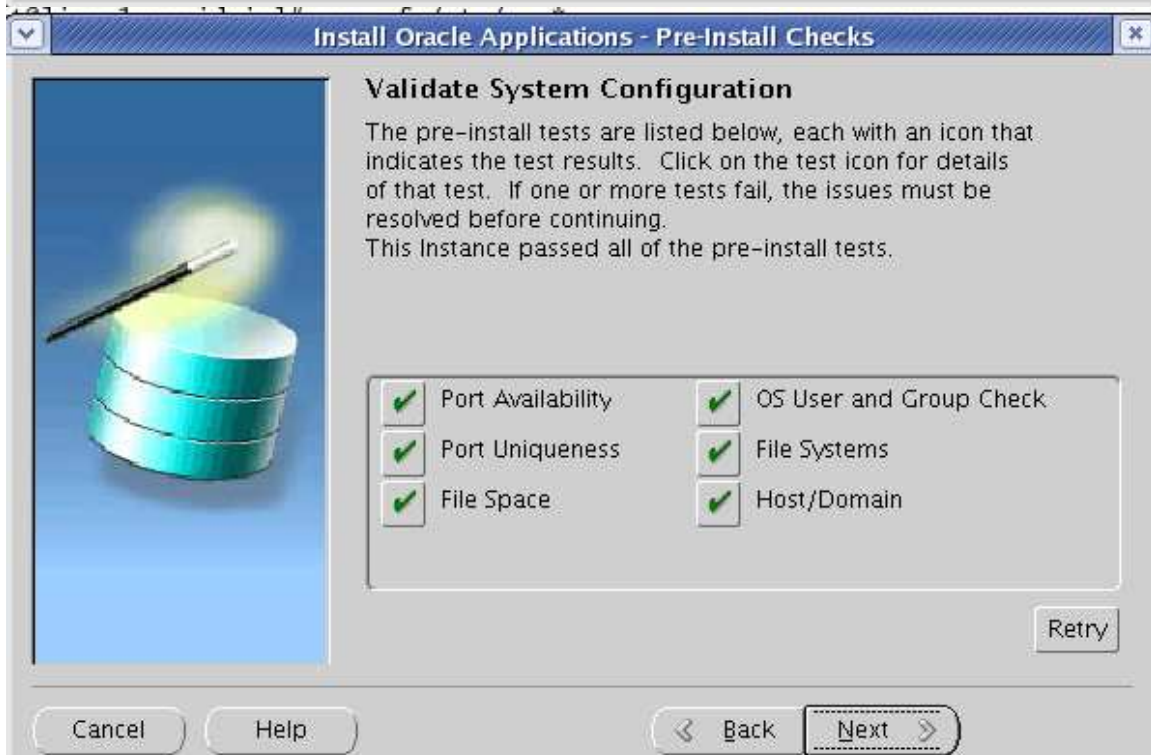
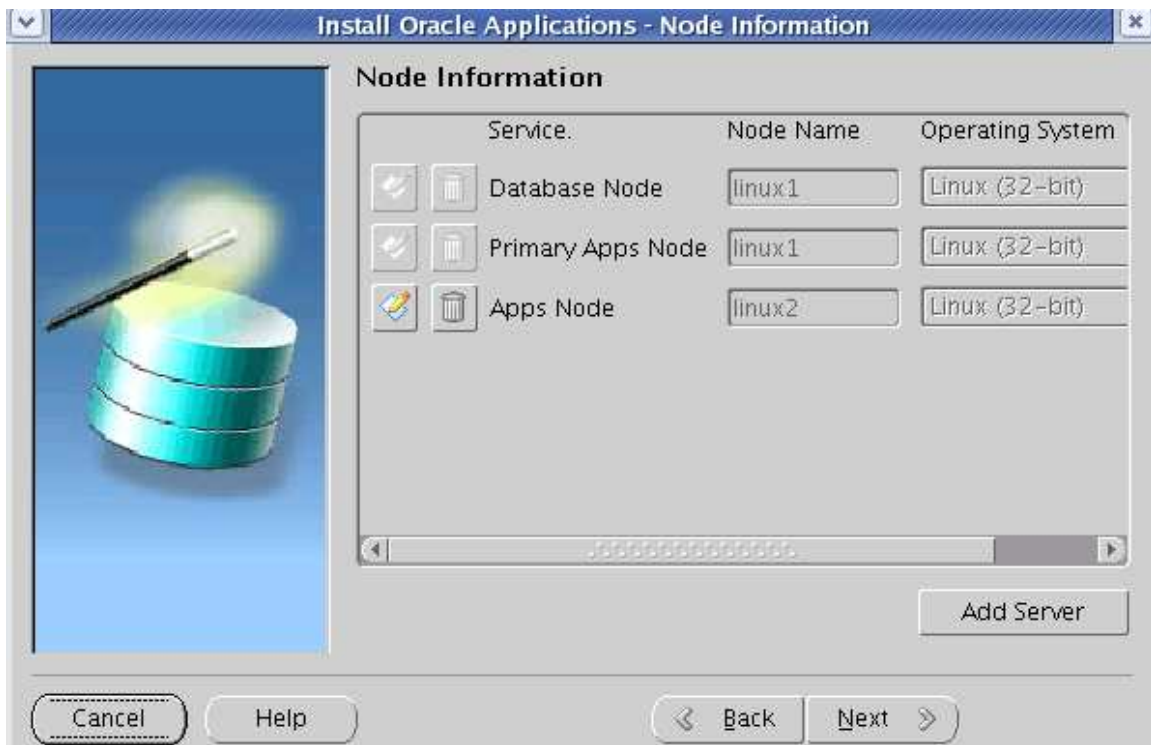
The screenshot shows a dialog box titled "Additional Applications Node Configuration". It contains the following fields and controls:

- Host Name:
- Domain Name:
- Operating System:  (dropdown menu)
- Apps OS User:
- Apps OS Group:
- Base directory:
- Instance directory:
- Shared File System:   (dropdown menu)
- 
-

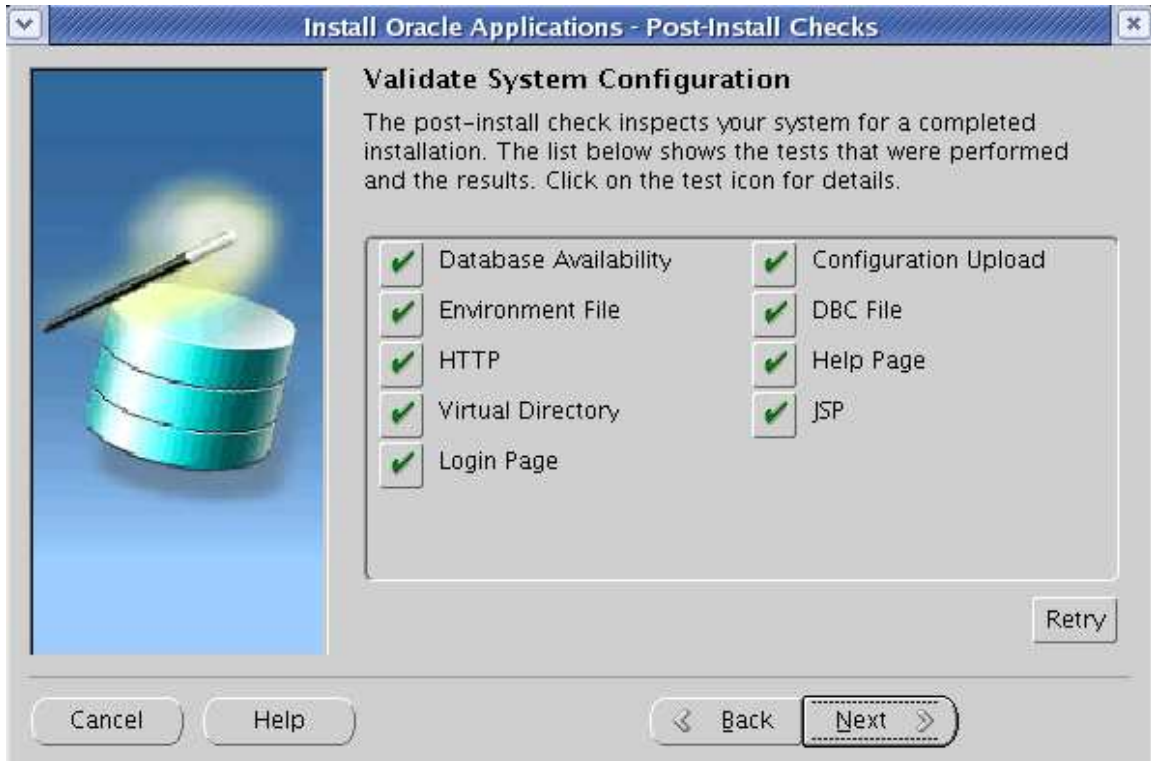
Author – *A.Kishore*  
<http://www.appsdba.info>



Author – *A.Kishore*  
<http://www.appsdba.info>



Author – *A.Kishore*  
<http://www.appsdba.info>



**Observation:** Though we have selected CPS on linux1 and Web/forms on linux2, both the application servers will have all the components, you need to start and stop the services required

```
SQL> select node_name,SUPPORT_CP,SUPPORT_forms,SUPPORT_web,SUPPORT_admin from fn
d_nodes;
```

```
NODE_NAME                S S S S
-----
LINUX1                    Y Y Y Y
LINUX2                     Y Y Y Y
```

```
su - oratest
[oratest@linux1 appsutil]$ cd $ORACLE_HOME/appsutil
[oratest@linux1 appsutil]$ ls conf_TEST.txt
conf_TEST.txt
-
```

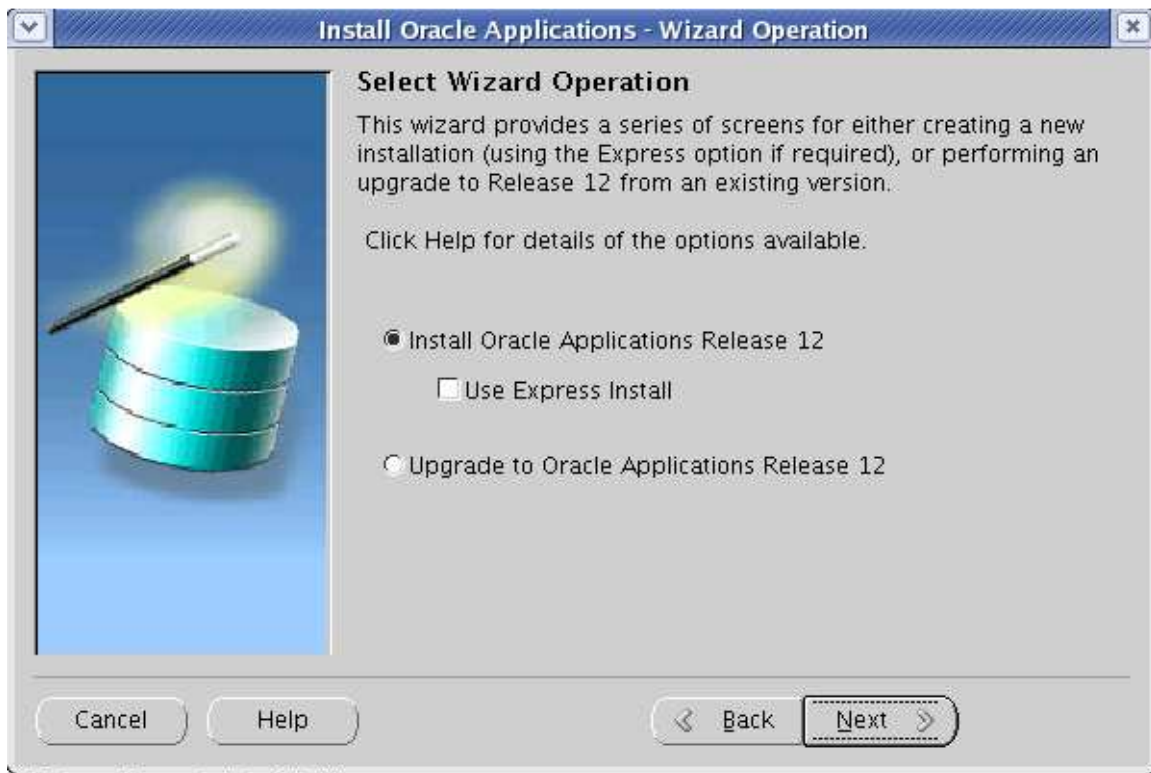
Author – *A.Kishore*  
<http://www.appsdba.info>

```
[root@linux1 rapidwiz]# su - appltest
[appltest@linux1 ~]$ cd $INST_TOP
[appltest@linux1 TEST_linux1]$ ls
admin  appl  appltmp  certs  conf_TEST.txt  conf_TEST.txt.bac  logs  ora  out  ;
[appltest@linux1 TEST_linux1]$ vi conf_TEST.txt
[appltest@linux1 TEST_linux1]$
```

On linux2

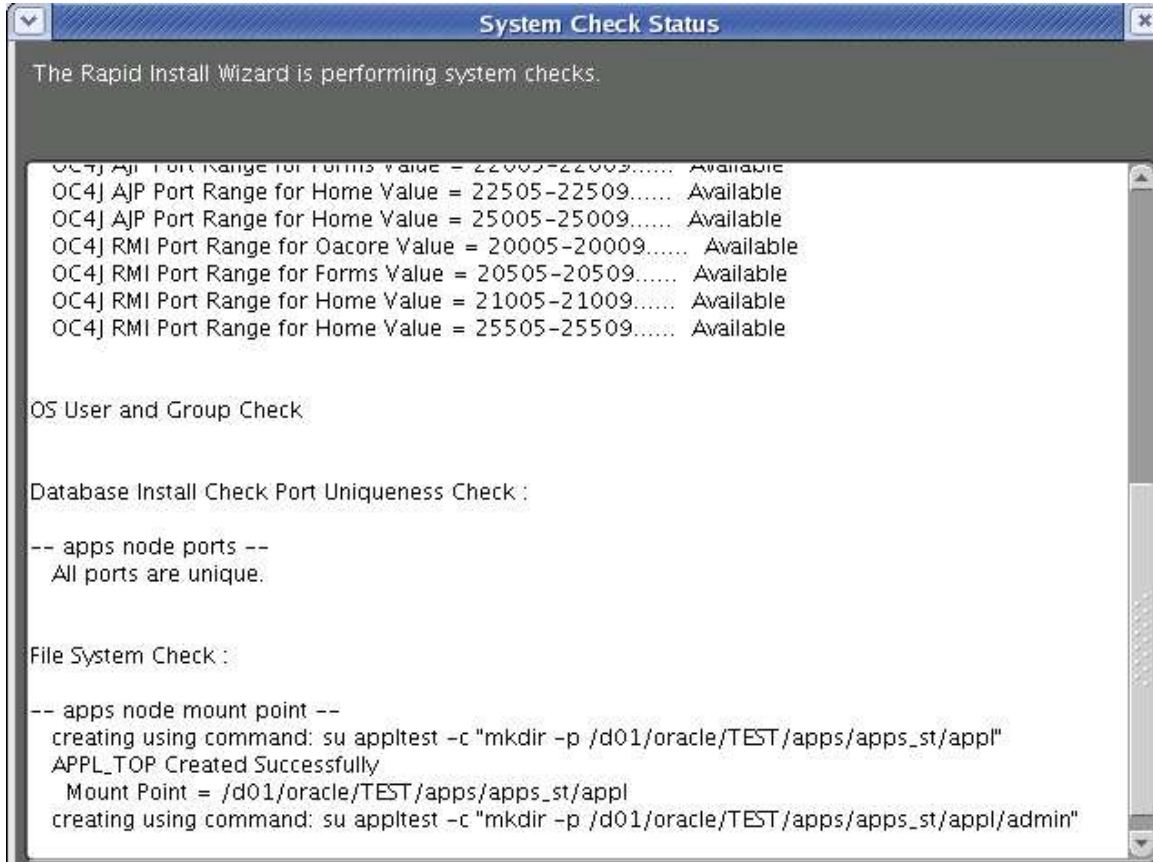


Author – *A.Kishore*  
<http://www.appsdba.info>





Author – *A.Kishore*  
<http://www.appsdba.info>



```
System Check Status
The Rapid Install Wizard is performing system checks.

OC4J AJP Port Range for Forms Value = 22005-22009..... Available
OC4J AJP Port Range for Home Value = 22505-22509..... Available
OC4J AJP Port Range for Home Value = 25005-25009..... Available
OC4J RMI Port Range for Oacore Value = 20005-20009..... Available
OC4J RMI Port Range for Forms Value = 20505-20509..... Available
OC4J RMI Port Range for Home Value = 21005-21009..... Available
OC4J RMI Port Range for Home Value = 25505-25509..... Available

OS User and Group Check

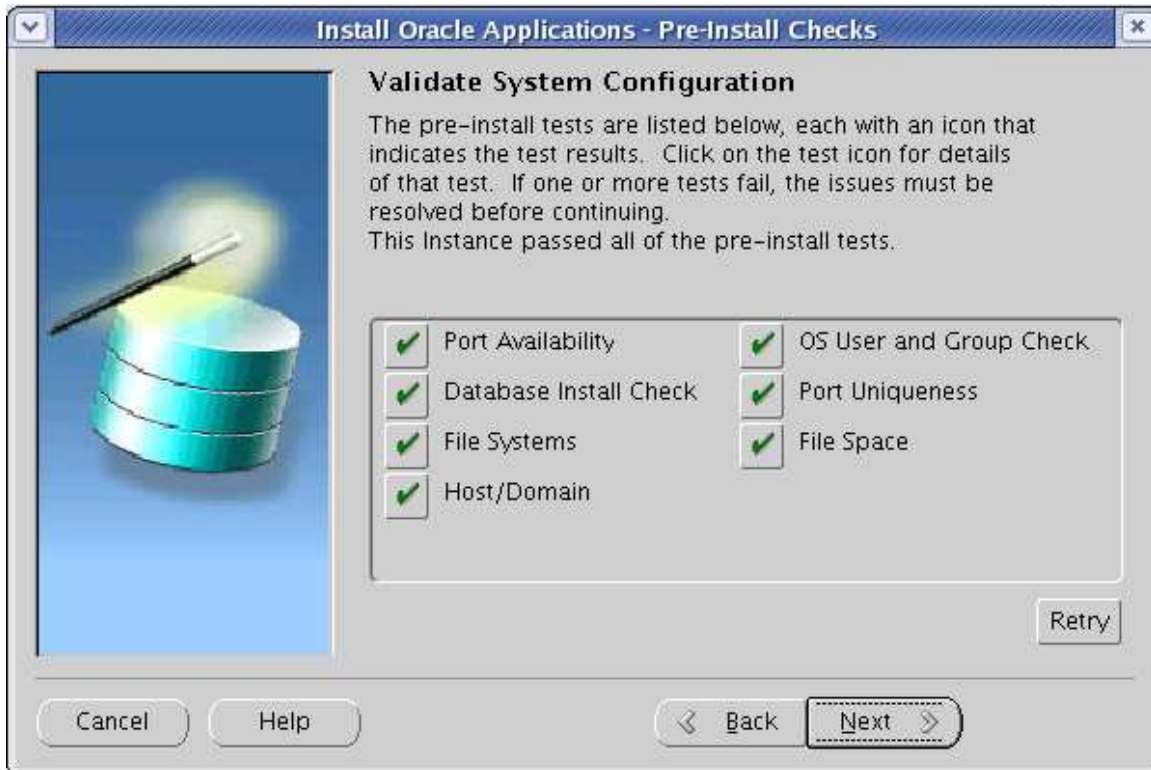
Database Install Check Port Uniqueness Check :

-- apps node ports --
All ports are unique.

File System Check :

-- apps node mount point --
creating using command: su apptest -c "mkdir -p /d01/oracle/TEST/apps/apps_st/appl"
APPL_TOP Created Successfully
Mount Point = /d01/oracle/TEST/apps/apps_st/appl
creating using command: su apptest -c "mkdir -p /d01/oracle/TEST/apps/apps_st/appl/admin"
```

Author – *A.Kishore*  
<http://www.appsdba.info>



Connect to <http://linux2.com:8001>

As mentioned both the nodes shall have application services running, you need to run/stop the services as required.