

Author – *A.Kishore*
<http://www.appsdba.info>

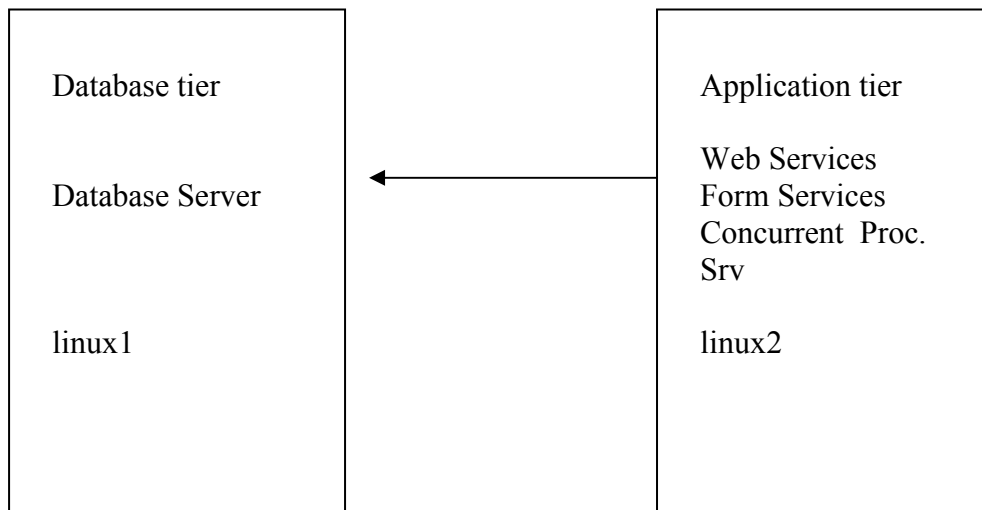
Multi Node Installation on Oracle Apps R12

On linux1 – Database Server

On linux2 – Web Services, Form Services, Concurrent Processing Server

Assumptions:

- 1> Install Red Hat 4 Operating System on both the server
Refer - http://www.appsdba.info/docs/oracle_apps/Installation/rh4.pdf
- 2> Pre-install tasks are completed on the both the servers
Refer - http://www.appsdba.info/docs/oracle_apps/Installation/R12/snir12-ln.pdf

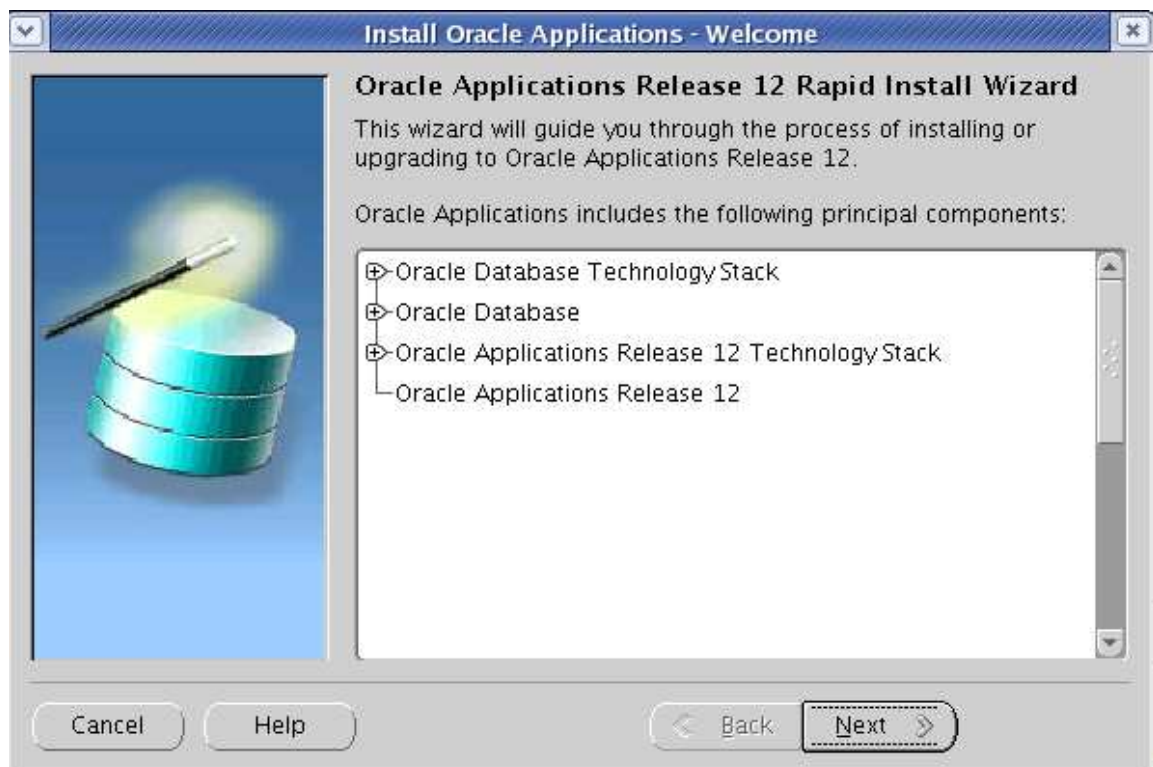


Author – *A.Kishore*
<http://www.appsdba.info>

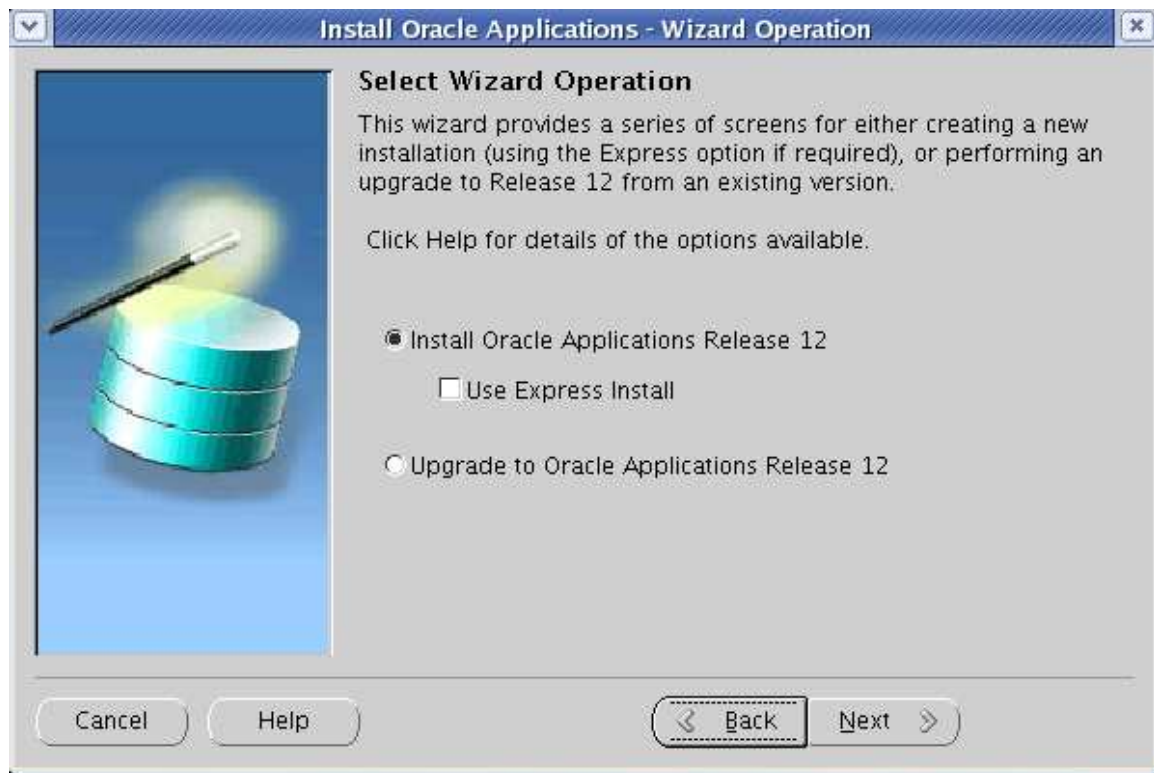
On linux1.

```
groupadd dba  
useradd oratest -g dba
```

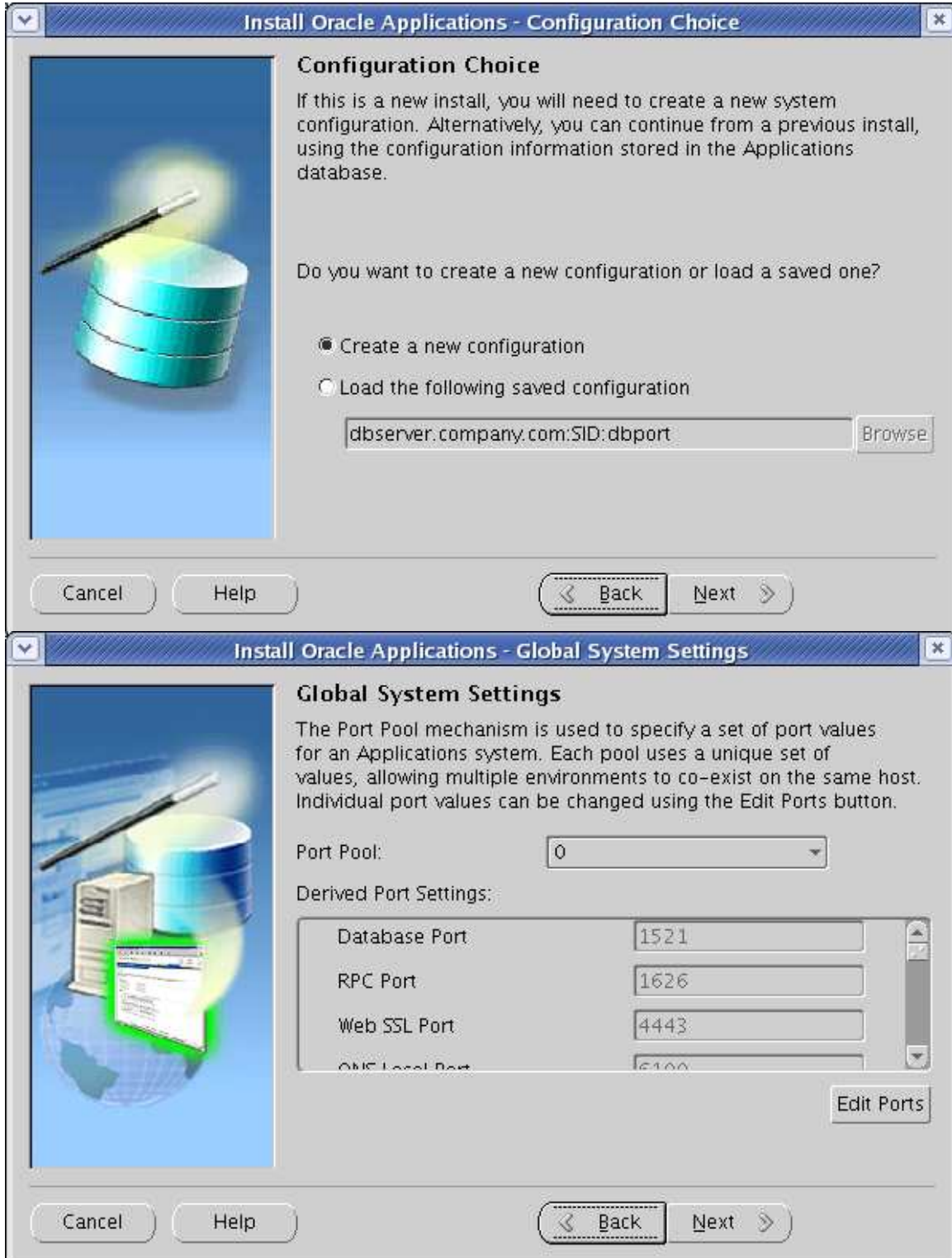
```
Run Rapidwiz  
./rapidwiz
```



Author – *A.Kishore*
<http://www.appsdba.info>



Author – *A.Kishore*
<http://www.appsdba.info>




Author – *A.Kishore*
<http://www.appsdba.info>

Install Oracle Applications - Database Node

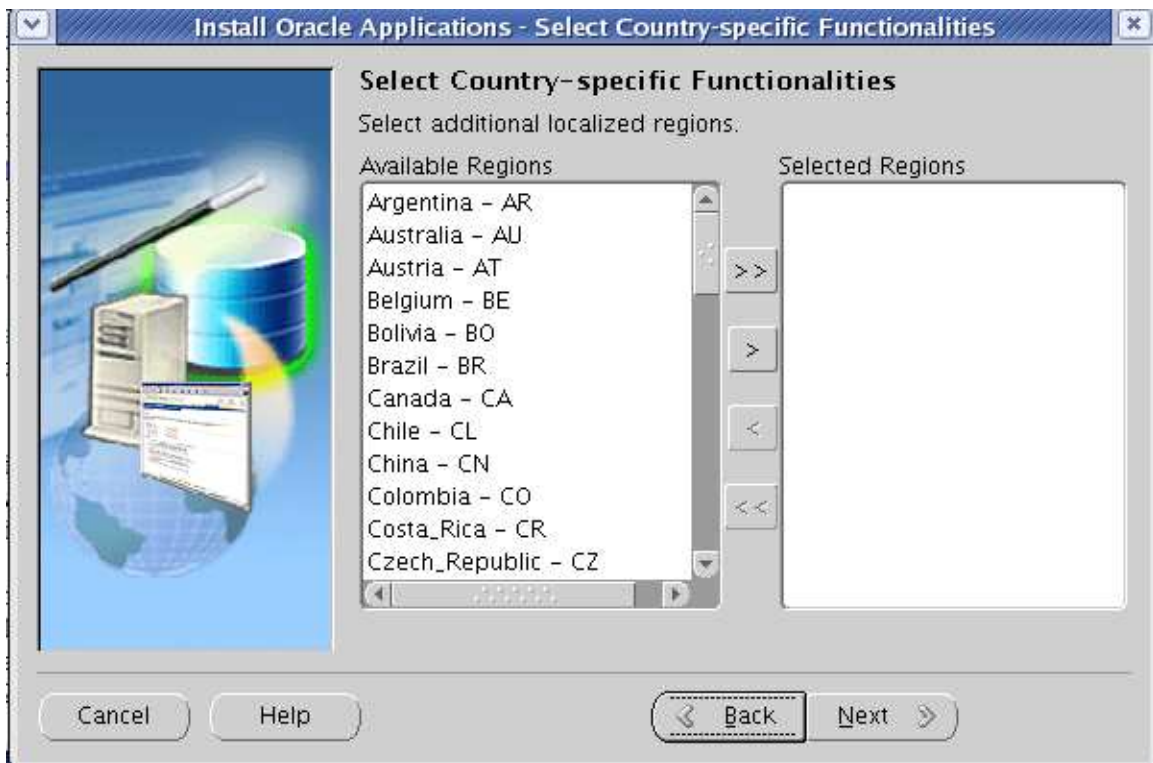
Database Node Configuration

Use the Edit Paths button to see file system details.

Database Type	Fresh Database
Database SID	TEST
Host Name	linux1
Domain Name	com
Operating System	Linux (32-bit)
Database OS User	oratest
Database OS Group	dba
Base directory	/d01/oracle/TEST



Author – *A.Kishore*
<http://www.appsdba.info>



Author – *A.Kishore*
<http://www.appsdba.info>

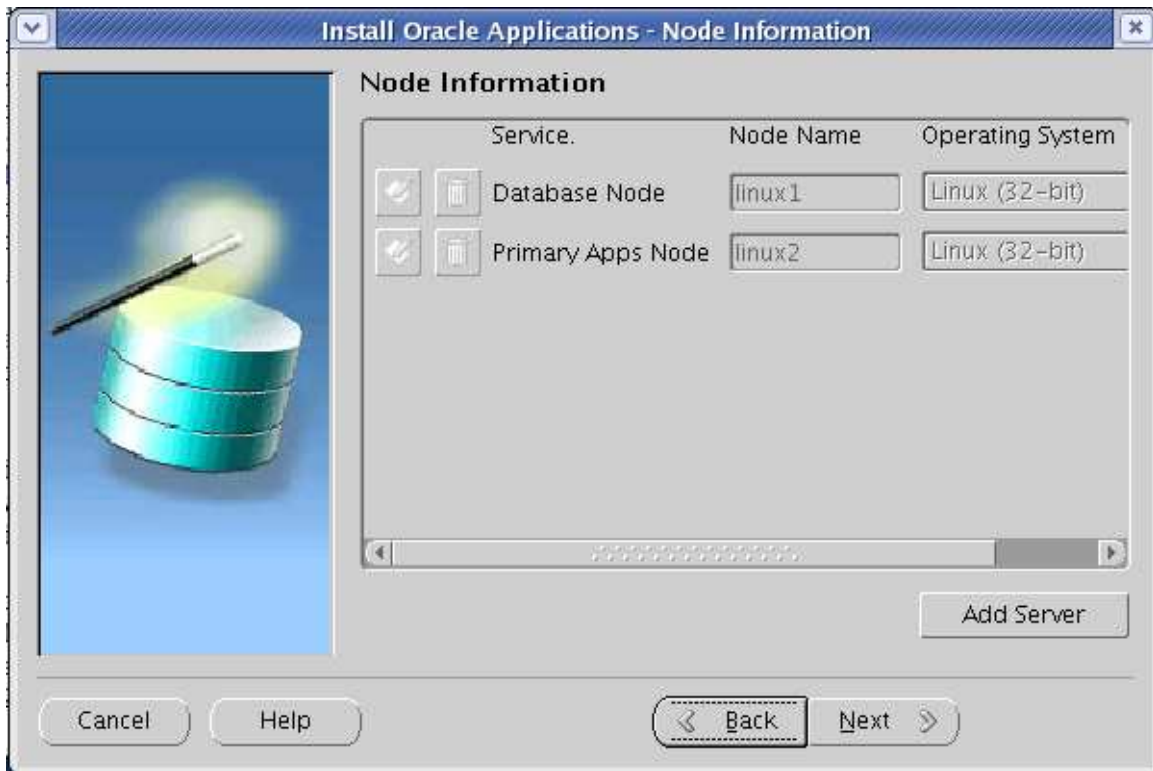
Install Oracle Applications - Primary Applications Node

Primary Applications Node Configuration

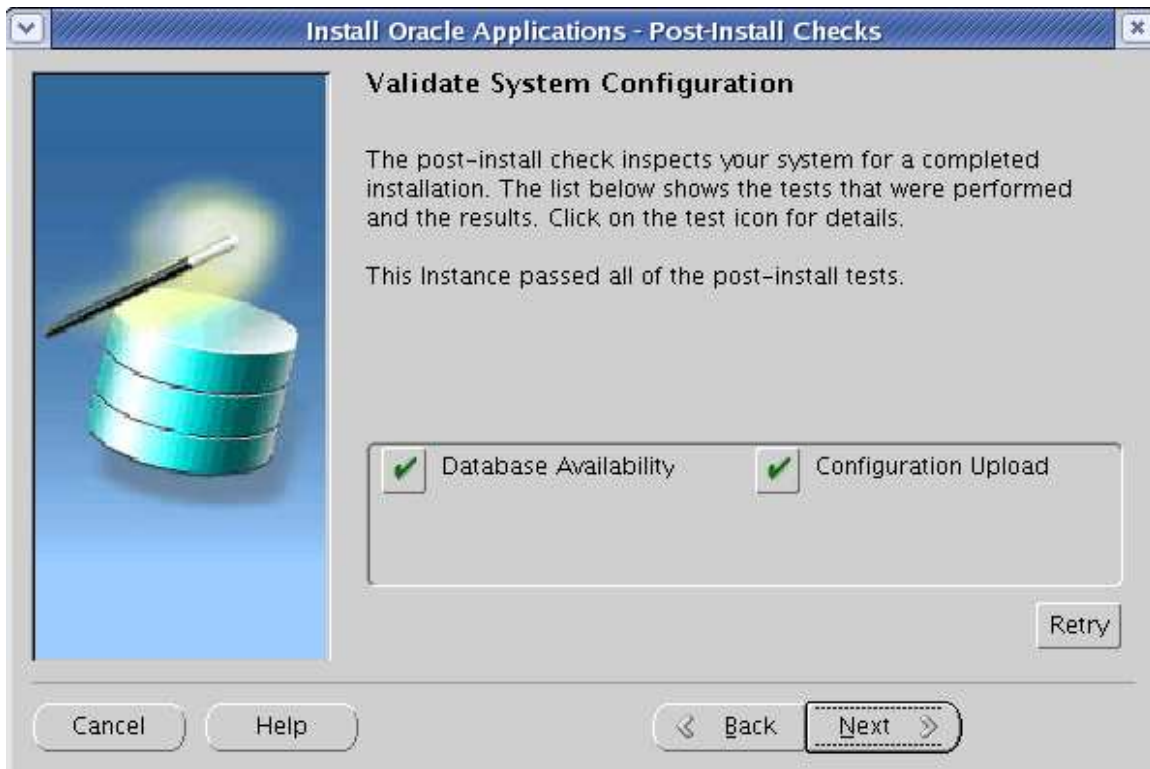
Use the edit buttons to see configuration details.

Host Name	<input type="text" value="linux2"/>
Domain Name	<input type="text" value="com"/>
Operating System	<input type="text" value="Linux (32-bit)"/>
Apps OS User	<input type="text" value="apptest"/>
Apps OS Group	<input type="text" value="dba"/>
Base directory	<input type="text" value="/d01/oracle/TEST"/> <input type="button" value="Browse"/>
Instance directory	<input type="text" value="/d01/oracle/TEST/inst"/> <input type="button" value="Browse"/>

Author – *A.Kishore*
<http://www.appsdba.info>



Author – *A.Kishore*
<http://www.appsdba.info>



```
SQL> select node_name,SUPPORT_CP,SUPPORT_FORMS,SUPPORT_WEB,SUPPORT_ADMIN from fnd_nodes;
```

```
NODE_NAME          S S S S
-----
LINUX1             N N N N
LINUX2             Y Y Y Y
```

```
[oratest@linux1 appsutil]$ cd $ORACLE_HOME/appsutil
[oratest@linux1 appsutil]$ ls conf_TEST.txt
conf_TEST.txt
[oratest@linux1 appsutil]$ █
```

Check conf_TEST.txt, it will have entries of linux1 and linux2

Author – *A.Kishore*
<http://www.appsdba.info>

On linux2 server

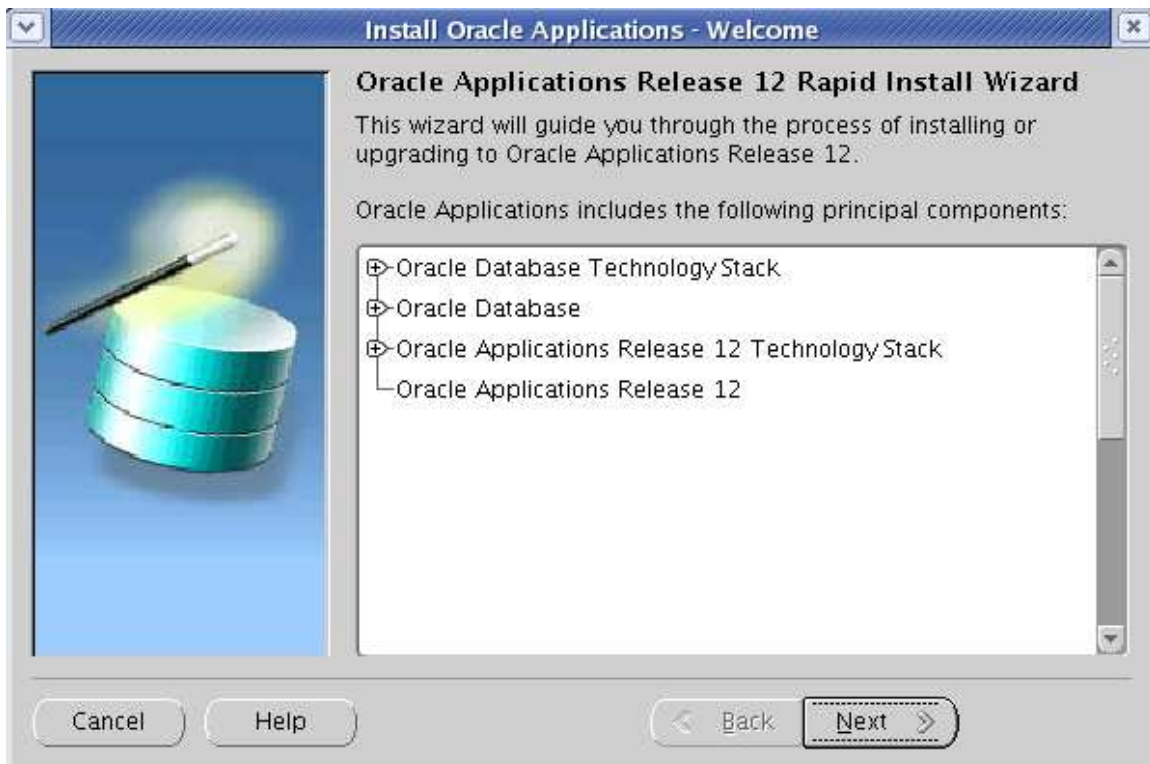
```
groupadd dba
useradd appltest -g dba
```

```
[root@linux2 rapidwiz]# ls
adautostg.pl  driver  images  oui          RapidWiz.ini      template
bin           etc     jlib    rapidwiz     RapidWizVersion   unzip
ClientWiz.cmd File    jre     RapidWiz.cmd RapidWizVersion.cmd
```

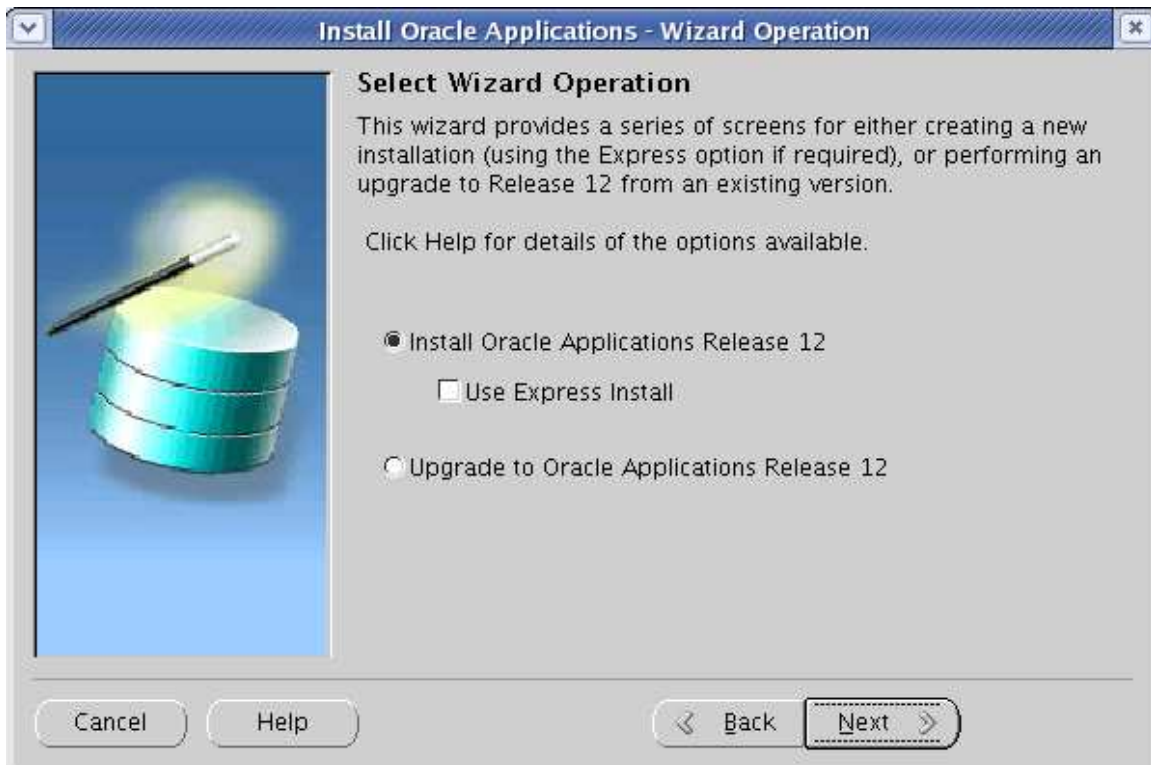
```
[root@linux2 rapidwiz]# ./rapidwiz
```

```
Rapid Install Wizard is validating your file system.....
4 dvd labels found
Rapid Install Wizard will now launch the Java Interface.....
```

```
[root@linux2 rapidwiz]#
```



Author – *A.Kishore*
<http://www.appsdba.info>



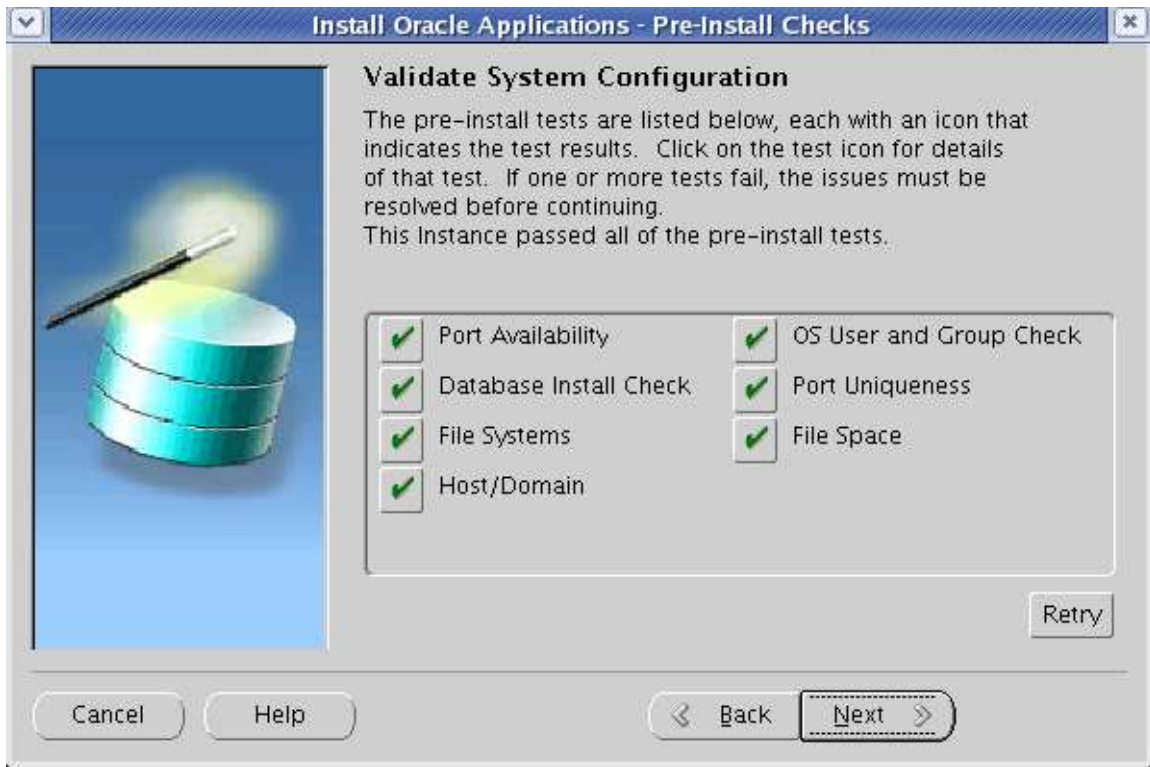
Author – *A.Kishore*
<http://www.appsdba.info>



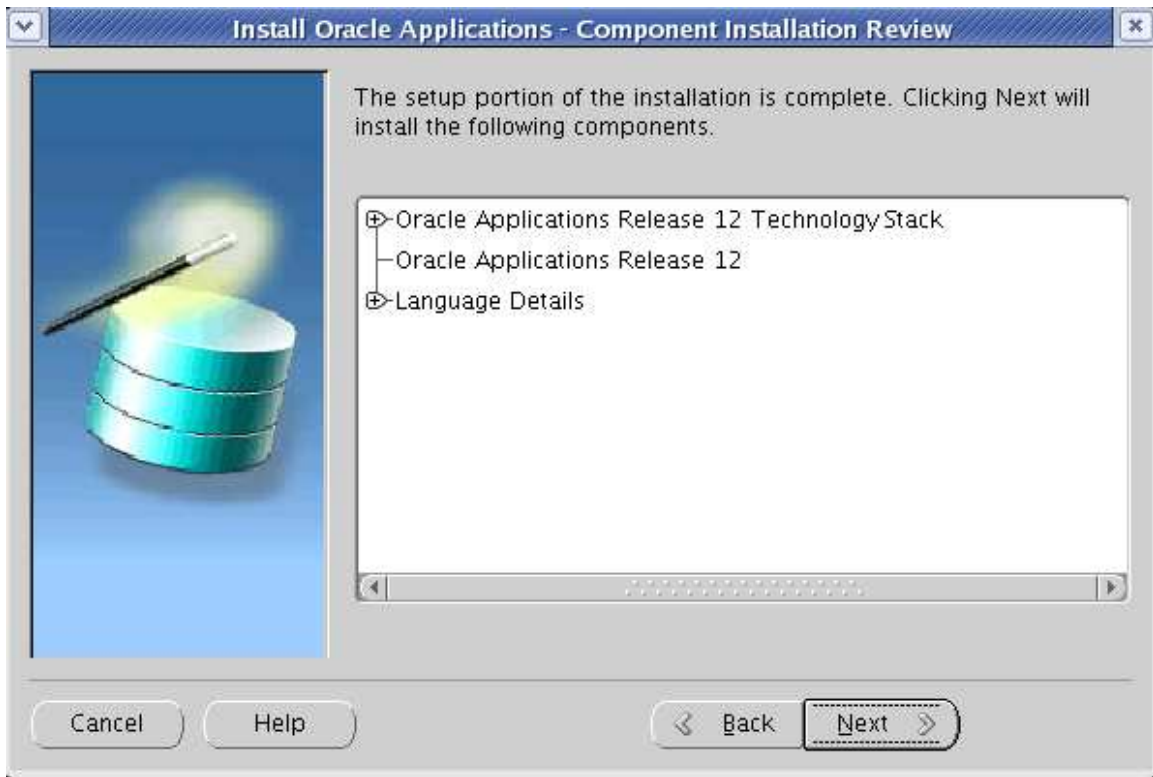
The Rapid Install Wizard is performing system checks.

```
APPL_TOP mount 3 has write privileges.  
Mount Point = /d01/oracle/TEST/apps/apps_st/appl  
test using command: su appltest -c "touch /d01/oracle/TEST/apps/apps_st/appl/test.tst"  
APPL_TOP mount 4 has write privileges:  
Mount Point = /d01/oracle/TEST/apps/apps_st/appl  
creating using command: su appltest -c "mkdir -p /d01/oracle/TEST/apps/apps_st/comn"  
COMMON_TOP Created Successfully  
Mount Point = /d01/oracle/TEST/apps/apps_st/comn  
creating using command: su appltest -c "mkdir -p  
/d01/oracle/TEST/apps/apps_st/comn/java/classes"  
JAVA_TOP Created Successfully  
Mount Point = /d01/oracle/TEST/apps/apps_st/comn/java/classes  
creating using command: su appltest -c "mkdir -p /d01/oracle/TEST/apps/tech_st/10.1.3  
/appsutil/jdk"  
JDK_TOP Created Successfully  
Mount Point = /d01/oracle/TEST/apps/tech_st/10.1.3/appsutil/jdk  
creating using command: su appltest -c "mkdir -p /d01/oracle/TEST/inst/apps/TEST_linux2/temp"  
Temp Directory Created Successfully  
Mount Point = /d01/oracle/TEST/inst/apps/TEST_linux2/temp  
creating using command: su appltest -c "mkdir -p  
/d01/oracle/TEST/inst/apps/TEST_linux2/admin/log"  
APPL_TOP admin Install Log Directory Created Successfully  
Mount Point = /d01/oracle/TEST/inst/apps/TEST_linux2/admin/log  
updating using command: su appltest -c "chmod -R 775  
/d01/oracle/TEST/inst/apps/TEST_linux2/admin/log"
```

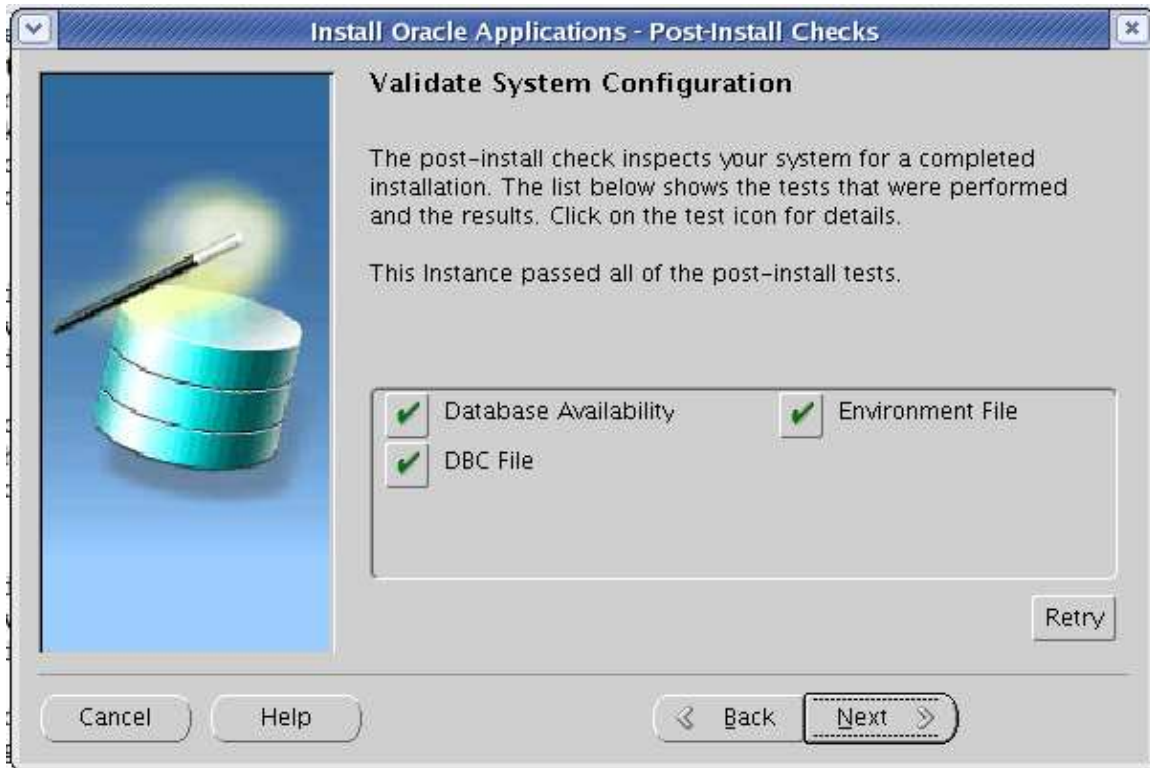
Author – *A.Kishore*
<http://www.appsdba.info>



Author – *A.Kishore*
<http://www.appsdba.info>



Author – *A.Kishore*
<http://www.appsdba.info>



Connect to <http://linux2.com:8000> and check whether the application is working

By default OEM is visible in PROD instance, follow the below steps

Here is an excerpt of the document.

SolutionLogin as sysadmin/sysadmin

Choose System Administrator

Go to User Define and query up %sysadmin%

Add the responsibility System Administration

Save and exit applications.

Bounce services - adstpall.sh and adstrtal.sh (located in <INST_TOP>/admin/scripts)

Login as sysadmin and choose "System Administration"

Author – *A.Kishore*
<http://www.appsdba.info>

Applications Dashboard | Site Map

Applications Dashboard: TEST Navigate to

Overview | Performance | Critical Activities | Diagnostics | Business Flows | Security | Software Updates

Applications System Status

Data Retrieved: 04-Aug-2008 23:59:52 

Host	Platform	Host Status	Admin	Database	Concurrent Processing	Forms	Web
LINUX1	LINUX Intel	✓		✓			
LINUX2	LINUX Intel	✓	✓		✓	✓	✓