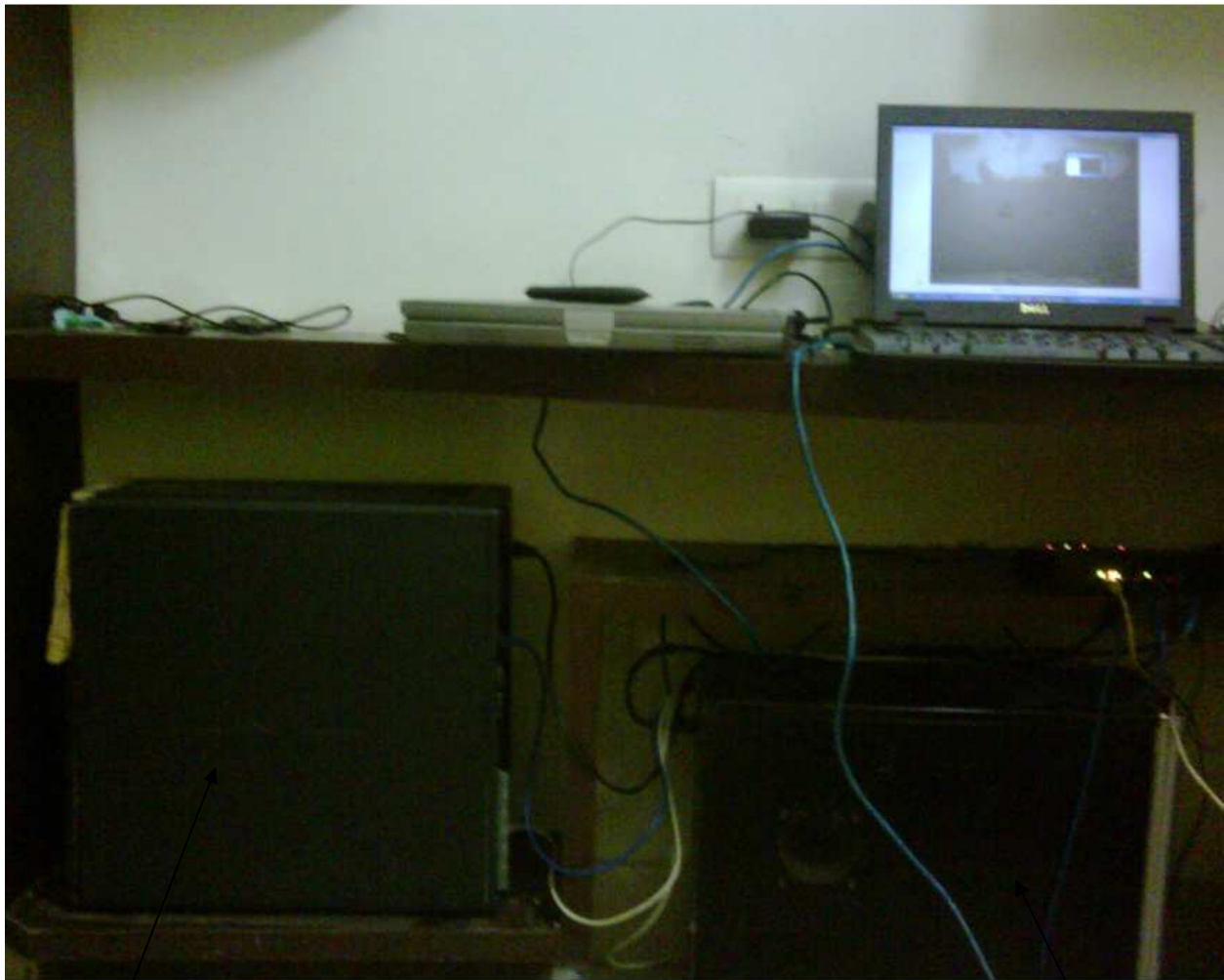


Agile PLM Integration with Oracle E-Business Suite R12.1.1 using Application Integration Architecture (PIP Integration)

System Setup -



Linux1 – 4 GB + 500 GB HDD

Oracle Application R12.1.1

Integration

Oracle 10g DB + Oracle SOA 10.1.3.5 +
AIA Foundation pack + AIA (Agile +
Ebusiness Integration)

linux2 – 4 GB + 250 GB HDD

**Oracle 10g + Application Server
10.1.3.4 + Agile PLM 9.3.0.2**

1> Install Oracle Application R12.1.1

I have installed on linux1 server using the below steps

http://www.appsdba.info/docs/oracle_apps/Installation/R12/sni-ln64bit.pdf

2> Install Agile PLM 9.3.0.2

I have installed on linux2 server using the below steps

<http://www.appsdba.info/docs/SOA/1-Database Node Installation.pdf>

<http://www.appsdba.info/docs/SOA/2 Agile 9302.pdf>

3> Install Application Integration Architecture (Foundation Pack)

I have installed on linux1 server using the below steps

<http://www.appsdba.info/docs/SOA/Install Oracle10g 10204.pdf>

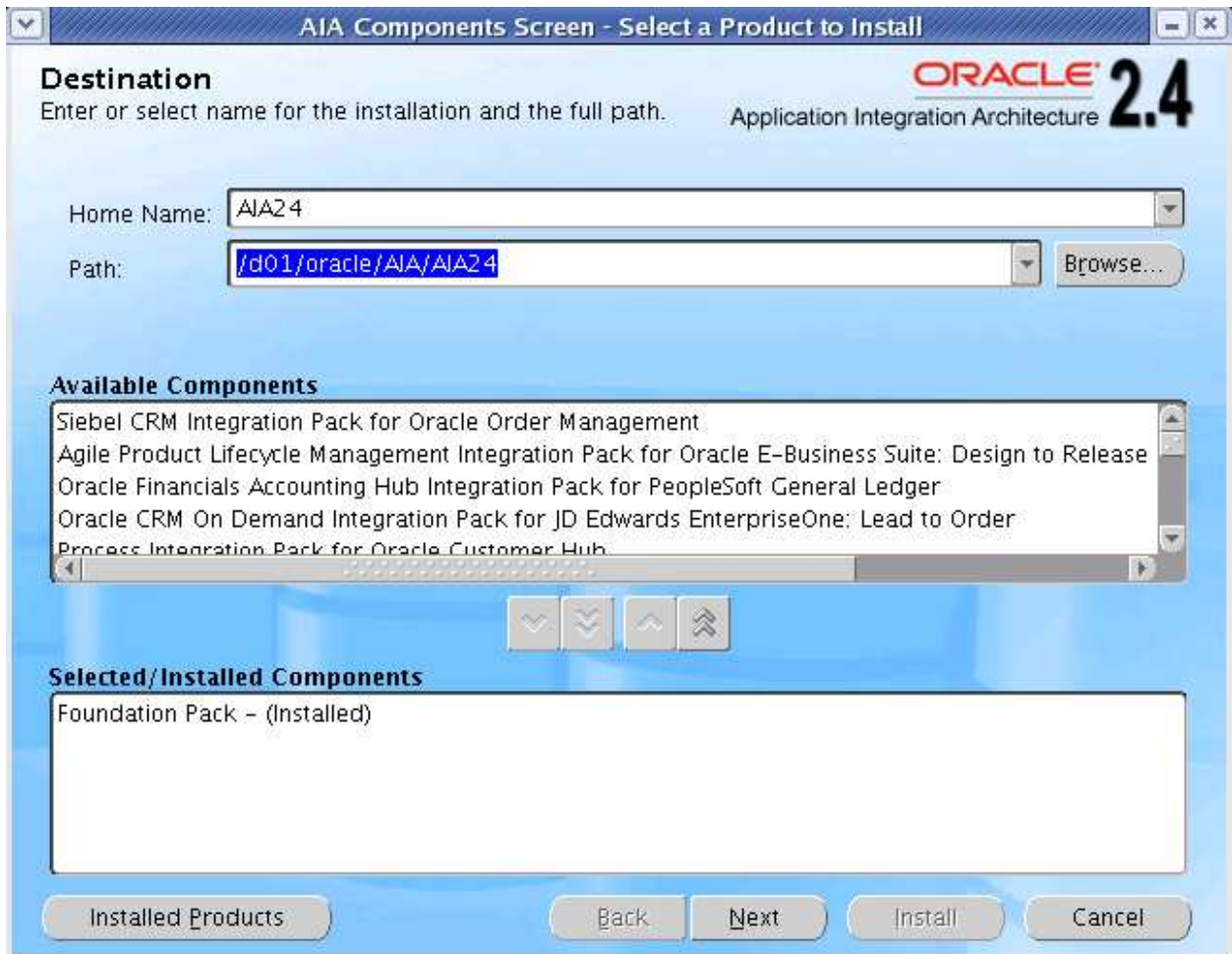
<http://www.appsdba.info/docs/SOA/2 Install SOA 10.1.3. 5.pdf>

http://www.appsdba.info/docs/SOA/3_AIA_Install.pdf

4> Integrate Agile PLM 9.3.0.2 with Oracle Application R12.1.1 using Application Integration Architecture (PIP Integration)

Below are steps followed –

```
linux1-> cd AIA/  
linux1-> ls  
Disk1 Translations V17392-01.zip  
linux1-> cd Disk1/  
linux1-> ls  
install stage  
linux1-> cd install/  
linux1-> ls  
addLangs.sh          detachHome.sh        oraparamsilent.ini  unzip  
addNode.sh           lsnodes              resource  
AIAValidCombinations.xml oneclick.properties runInstaller  
attachHome.sh        oraparam.ini         runSSHSetup.sh  
linux1-> ./runInstaller
```



Oracle Universal Installer: Details of the Local SOA Suite Installation

ORACLE 2.4
Application Integration Architecture

Details of the Local SOA Suite Installation

Specify the SOA Suite server details. This is the server where all AIA artifacts will be deployed.

Server Name	<input type="text" value="linux1.oracle.com"/>
HTTP Port	<input type="text" value="7777"/>
Username	<input type="text" value="oc4jadmin"/>
Password	<input type="password" value="*****"/>
OC4J Instance Name	<input type="text" value="oc4j_soa"/>
OPMN Request Port	<input type="text" value="6003"/>

Help Installed Products... Back Next Install Cancel

Oracle Universal Installer: Oracle Database Server Details

ORACLE 2.4
Application Integration Architecture

Oracle Database Server Details

Specify the Oracle infrastructure database server details. This is the database instance where the entire AIA schema and related objects are created. It may be the same database as the SOA database instance. See the Application Integration Architecture Foundation Pack 2.4 Install Guide for details.

Server Name	<input type="text" value="linux1.oracle.com"/>
Port Number	<input type="text" value="1521"/>
Username (with SYSDBA privilege)	<input type="text" value="sys"/>
Password	<input type="password" value="*****"/>
SID	<input type="text" value="AIA"/>

Help Installed Products... Back Next Install Cancel

Oracle Universal Installer: Oracle Service Registry Details

ORACLE 2.4
Application Integration Architecture

Oracle Service Registry Details

Specify the Oracle Service Registry details. This is the registry where the AIA artifacts will be published. Service Registry URL Example: <http://myserver.mycompany.com:80/registry>. If you do not wish to publish to Oracle Service Registry, click Next to continue.

Service Registry URL

Username

Password

AIA artifacts will not be automatically published to the service registry mentioned here during this installation. Publishing to service registry would be a post install activity. Please refer the AIA Installation Guide for more information.

AIA Components Screen - Select a Product to Install

Destination
Enter or select name for the installation and the full path.

Home Name:

Path:

Available Components

- Siebel CRM Integration Pack for Oracle Order Management
- Oracle Financials Accounting Hub Integration Pack for PeopleSoft General Ledger
- Oracle CRM On Demand Integration Pack for JD Edwards EnterpriseOne: Lead to Order
- Process Integration Pack for Oracle Customer Hub
- Process Integration Pack for Oracle Product Hub

Selected/Installed Components

- Foundation Pack - (Installed)
- Agile Product Lifecycle Management Integration Pack for Oracle E-Business Suite: Design to Release

Oracle Universal Installer: Agile Details

ORACLE 2.4
Application Integration Architecture

Agile Details

Enter details for the Agile installation.

Agile PLM Host	<input type="text" value="linux2.oracle.com"/>
Agile PLM Port	<input type="text" value="7777"/>
Agile PLM Virtual Path	<input type="text" value="Agile"/>
Agile PLM Integration User Name	<input type="text" value="admin"/>
Agile PLM Integration User Password	<input type="password" value="*****"/>

Help Installed Products... Back **Next** Install Cancel

Oracle Universal Installer: E-Business Suite Server Details

ORACLE 2.4
Application Integration Architecture

E-Business Suite Server Details

Enter the server details for the Oracle E-Business Suite

E-Business Suite Host Name	<input type="text" value="linux1.oracle.com"/>
E-Business Suite Port	<input type="text" value="8004"/>
E-Business Suite User Name	<input type="text" value="sysadmin"/>
E-Business Suite Password	<input type="password" value="*****"/>
Workflow Business Event System Name	<input type="text" value="PROD.ORACLE.COM"/>
E-Business Suite Version	<input type="text" value="12.1.1"/>



Help Installed Products... Back Next Install Cancel

To know the workflow business event system name – Login to Oracle application as sysadmin. Navigate to Workflow Administrator responsibility and select Administration function. You will find the details there.

Workflow Configuration

Enter workflow configuration information and select the "Apply" button to save your changes.

* Indicates required field

* Workflow System Administrator	<input type="text" value="SYSADMIN"/>	
<small>Set the value to '*' to grant administrative privileges to all users.</small>		
LDAP		
Enter the Oracle Internet Directory details to enable LDAP (Lightweight Directory Access Protocol) synchronization with the Workflow Directory Service.		
Host	<input type="text"/>	
Port	<input type="text"/>	
Username	<input type="text"/>	
Old Password	<input type="text"/>	
New Password	<input type="text"/>	
Repeat Password	<input type="text"/>	
Change Log Base Directory	<input type="text"/>	
User Base Directory	<input type="text"/>	
Business Event Local System		
Enter the Workflow Business Event System Name and System Processing Status.		
* System Name	<input type="text" value="PROD.ORACLE.COM"/>	
<small>This is the system name of the database where this instance of Oracle Workflow is installed.</small>		
* Status	<input type="text" value="Enabled"/>	

Oracle Universal Installer: E-Business Suite Database Details

ORACLE 2.4
Application Integration Architecture

E-Business Suite Database Details

Enter the database details for the Oracle E-Business Suite

E-Business Suite Database Host	<input type="text" value="linux1.oracle.com"/>
E-Business Suite Database Port	<input type="text" value="1525"/>
E-Business Suite Database User Name	<input type="text" value="system"/>
E-Business Suite Database Password	<input type="password" value="*****"/>
E-Business Suite Database SID	<input type="text" value="PROD"/>
Database Schema	<input type="text" value="apps"/>

Help Installed Products... Back **Next** Install Cancel





Abbreviations:

1. AIA:- Application Integration Architecture
2. SOA:- Service Oriented Architecture
3. OSR:- Oracle Service Registry
4. ODI:- Oracle Data Integrator
5. JDK:- Java Development kit
6. PIP:- Process Integration Pack