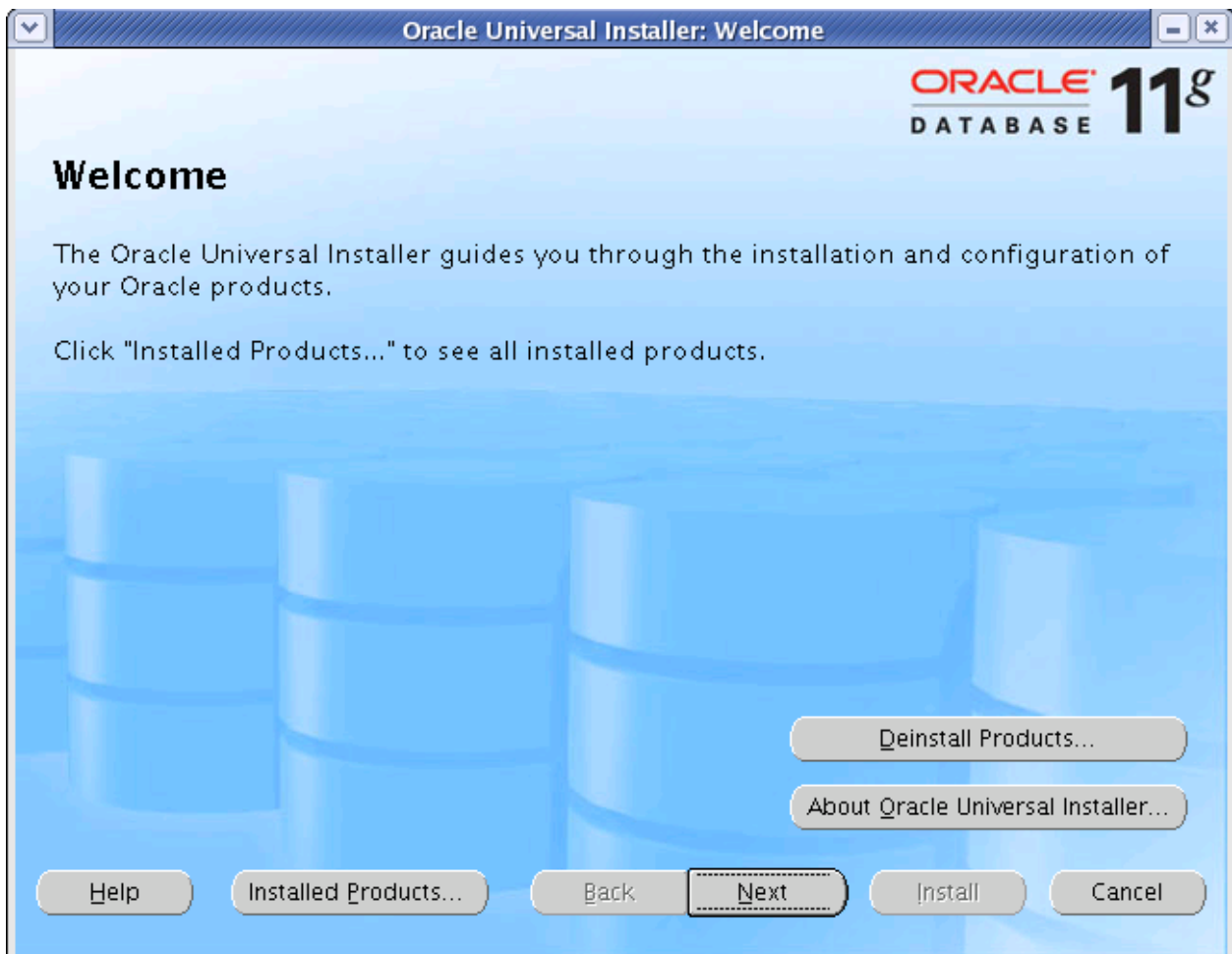


Author – *A.Kishore*
<http://www.appsdba.info>

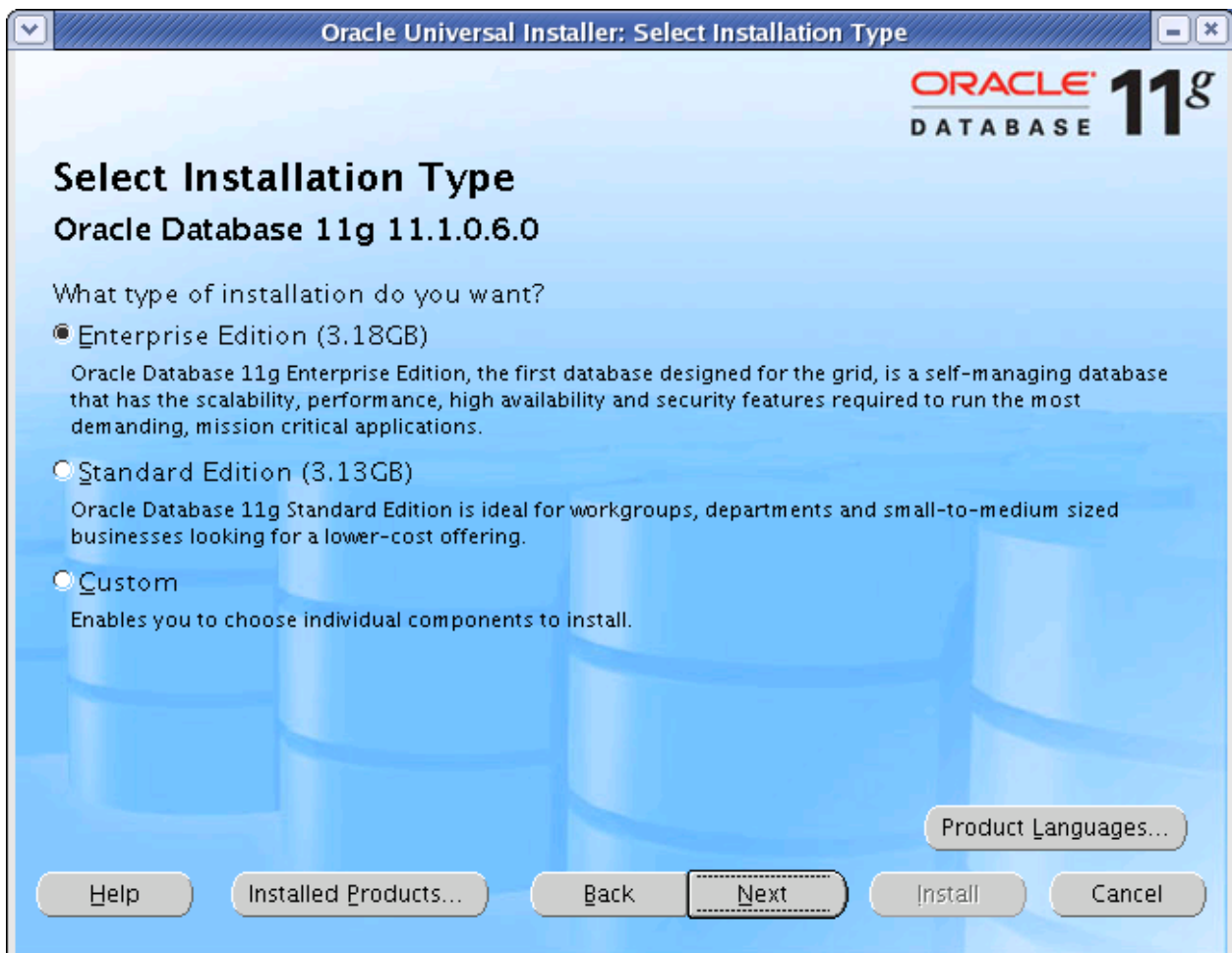
Install Oracle Database 11g Release 1

Create a user obi

```
/usr/sbin/useradd obi -g dba  
[obi@linux1 11.1.0.6]$ cd database/  
[obi@linux1 database]$ ./runInstaller
```



Author – A.Kishore
<http://www.appsdba.info>



Author – A.Kishore
<http://www.appsdba.info>

The screenshot shows the 'Oracle Universal Installer: Specify Home Details' window for Oracle Database 11g. The window title bar includes the Oracle logo and '11g'. The main heading is 'Install Location'. Below this, there is a paragraph explaining that the user should specify a base location for all Oracle software and configuration-related files, which will be the Oracle Base directory. A text box labeled 'Oracle Base:' contains the path '/d02/oracle/obi' and a 'Browse...' button. The next section is 'Software Location', with a paragraph explaining that the user should specify a base location for Oracle software files separate from database configuration files, which will be the Oracle Home directory. There are two text boxes: 'Name:' containing 'OraDb11g_home1' and 'Path:' containing '/d02/oracle/obi/product/11.1.0/db_1', both with 'Browse...' buttons. At the bottom, there are several buttons: 'Help', 'Installed Products...', 'Back', 'Next', 'Install', and 'Cancel'.

Oracle Universal Installer: Specify Home Details

ORACLE **11^g**
DATABASE

Install Location

Specify a base location for storing all Oracle software and configuration-related files. This location is the Oracle Base directory. Create one Oracle Base for each operating system user. By default, software and configuration files are installed by version and database name in the Oracle Base directory

Oracle Base: Browse...

Software Location

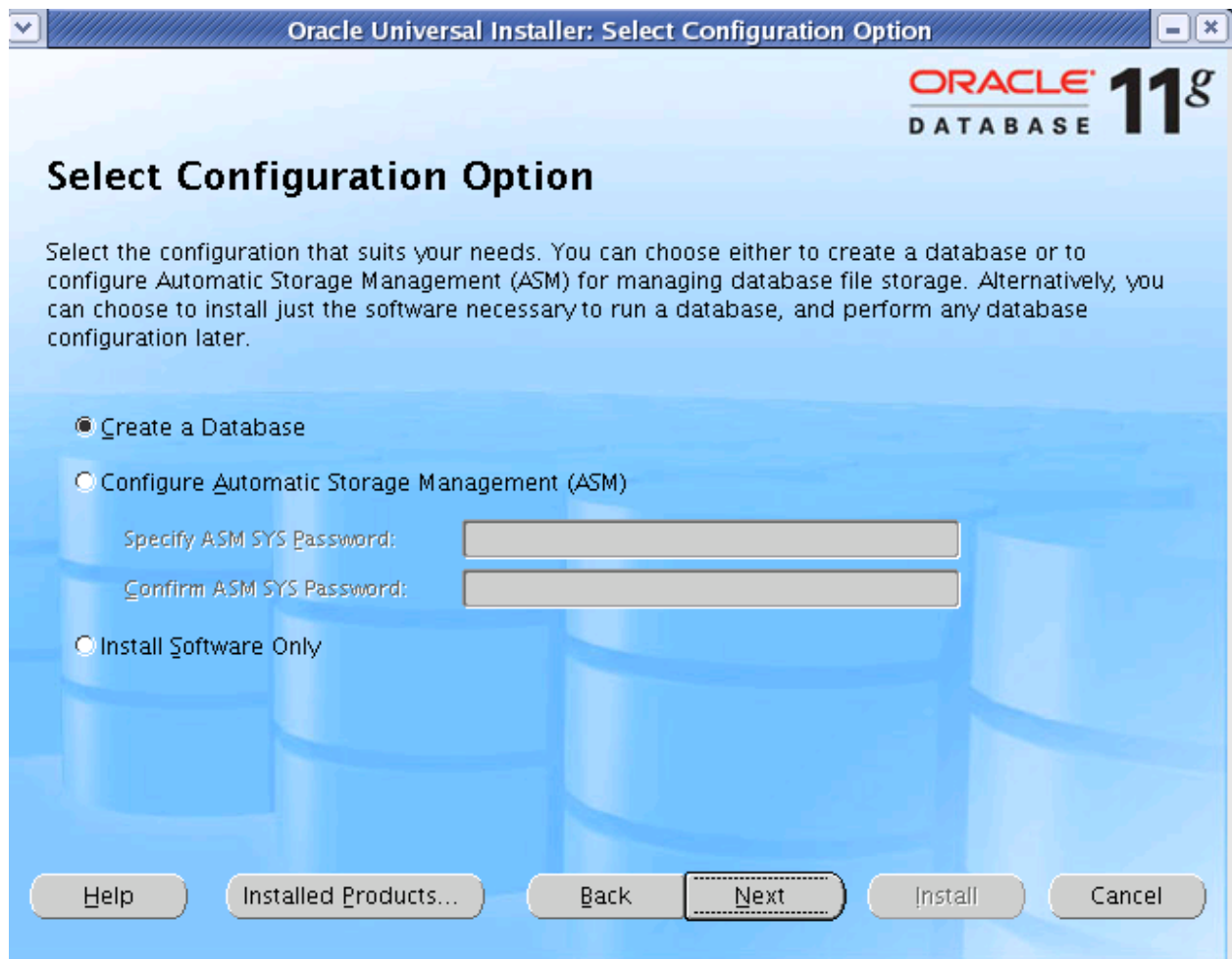
Specify a base location for storing Oracle software files separate from database configuration files in the Oracle Base directory. This software directory is the Oracle Home directory. Change the defaults below either to specify an alternative location, or to select an existing Oracle Home

Name:

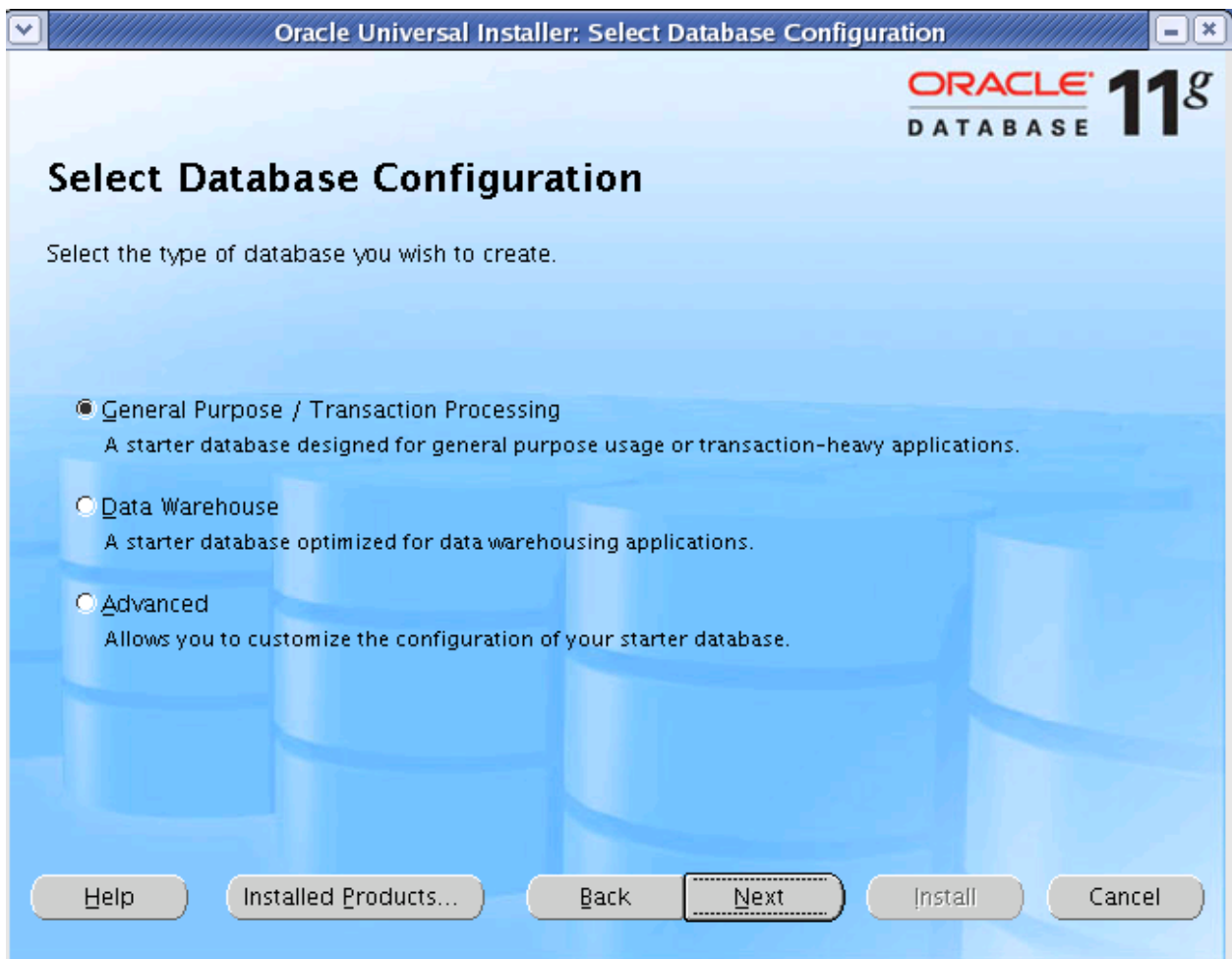
Path: Browse...

Help Installed Products... Back Next Install Cancel

Author – A.Kishore
<http://www.appsdba.info>



Author – *A.Kishore*
<http://www.appsdba.info>



Author – A.Kishore
<http://www.appsdba.info>

The screenshot shows a window titled "Oracle Universal Installer: Specify Database Configuration Options". The window has a blue background with a faint image of database cylinders. In the top right corner, there is the Oracle logo and "11g DATABASE". The main heading is "Specify Database Configuration Options". Below the heading, there is a paragraph: "An Oracle database is uniquely identified by a Global Database Name, typically of the form 'name.domain'." Below this paragraph is a text input field labeled "Global Database Name:" containing the text "obi.oracle.com". Another paragraph follows: "A database is referenced by at least one Oracle instance which is uniquely identified from any other instance on this computer by an Oracle System Identifier (SID)." Below this is a text input field labeled "SID:" containing the text "obi". At the bottom of the window, there are six buttons: "Help", "Installed Products...", "Back", "Next", "Install", and "Cancel".

Oracle Universal Installer: Specify Database Configuration Options

ORACLE 11g
DATABASE

Specify Database Configuration Options

An Oracle database is uniquely identified by a Global Database Name, typically of the form "name.domain".

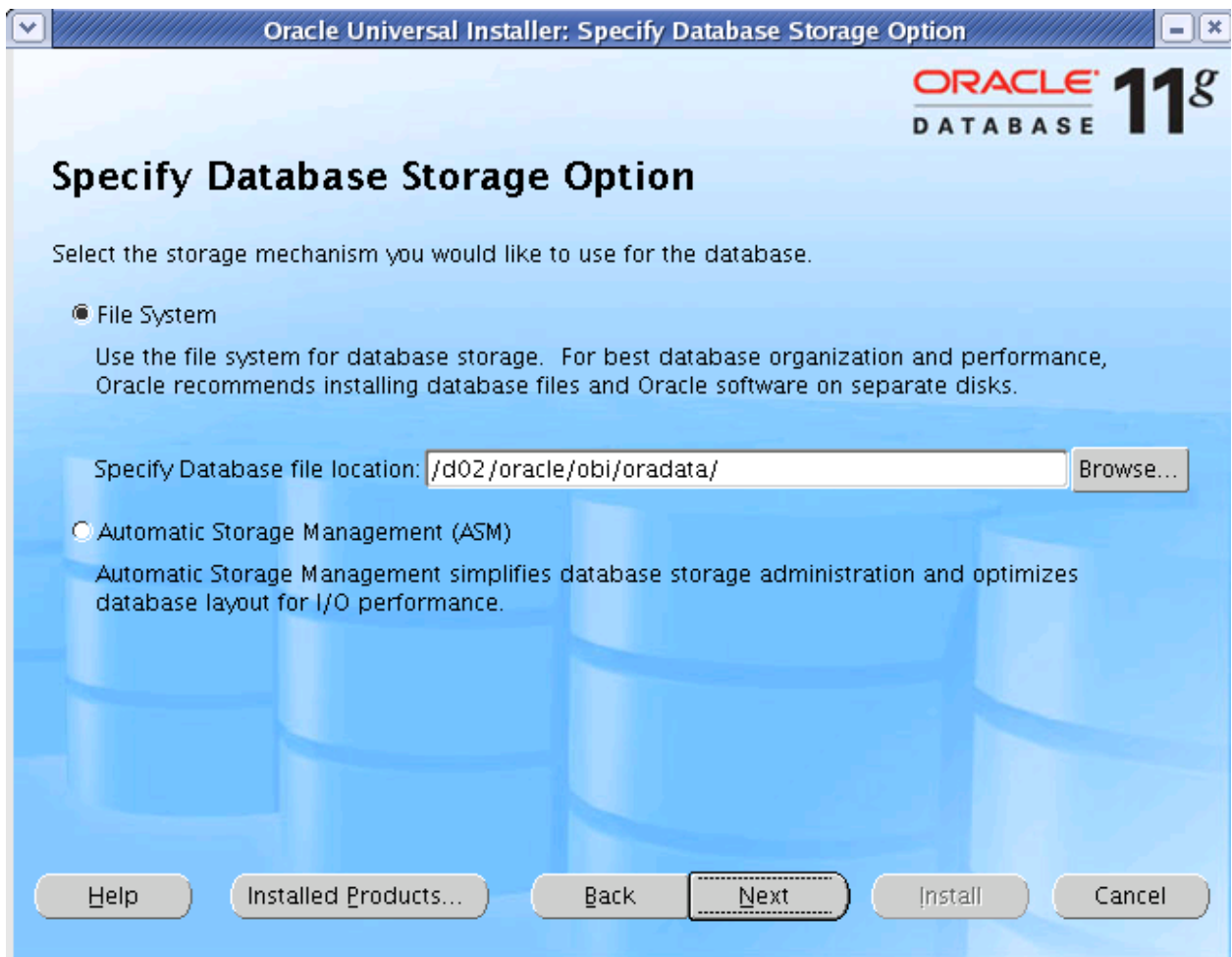
Global Database Name:

A database is referenced by at least one Oracle instance which is uniquely identified from any other instance on this computer by an Oracle System Identifier (SID).

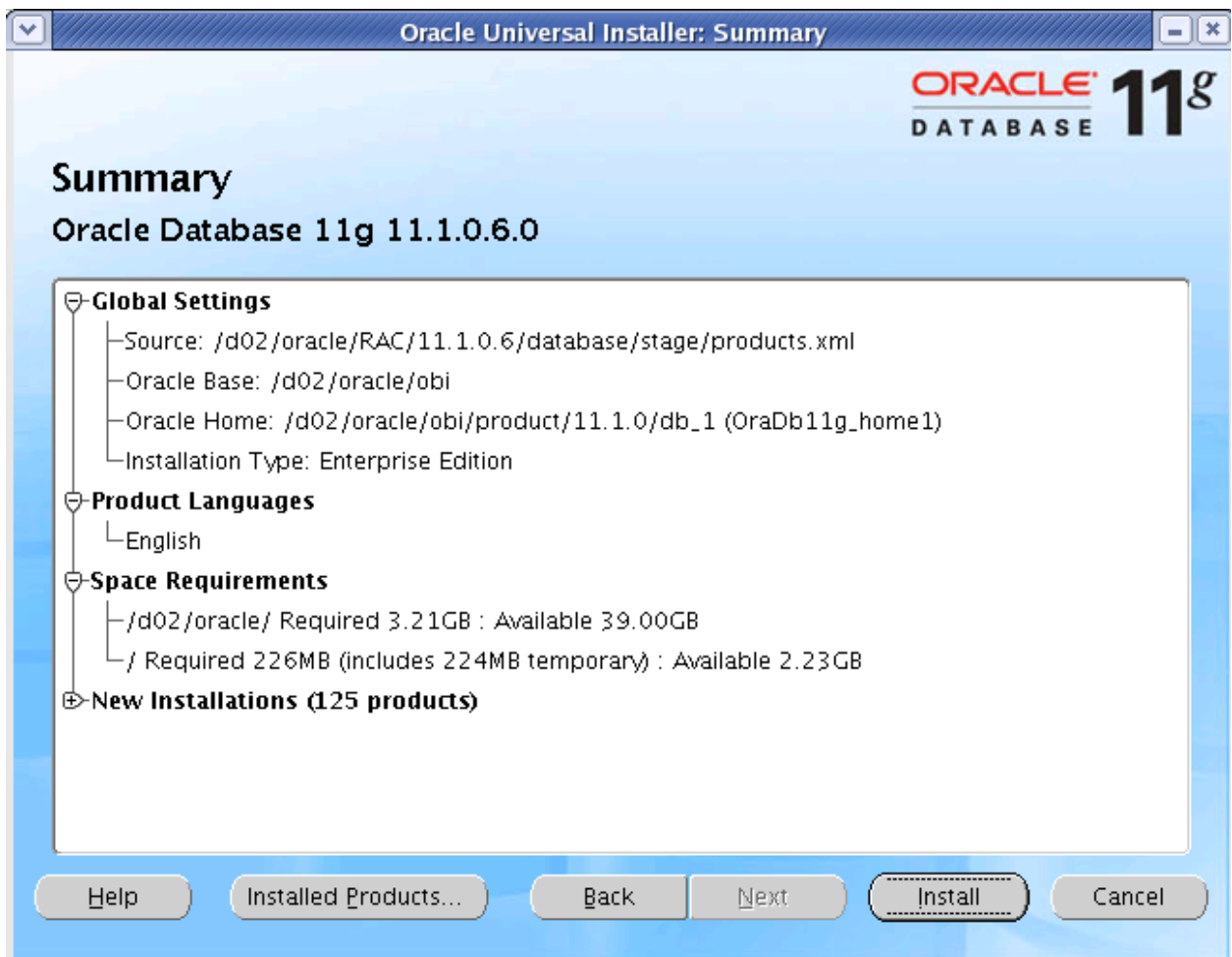
SID:

Help Installed Products... Back Next Install Cancel

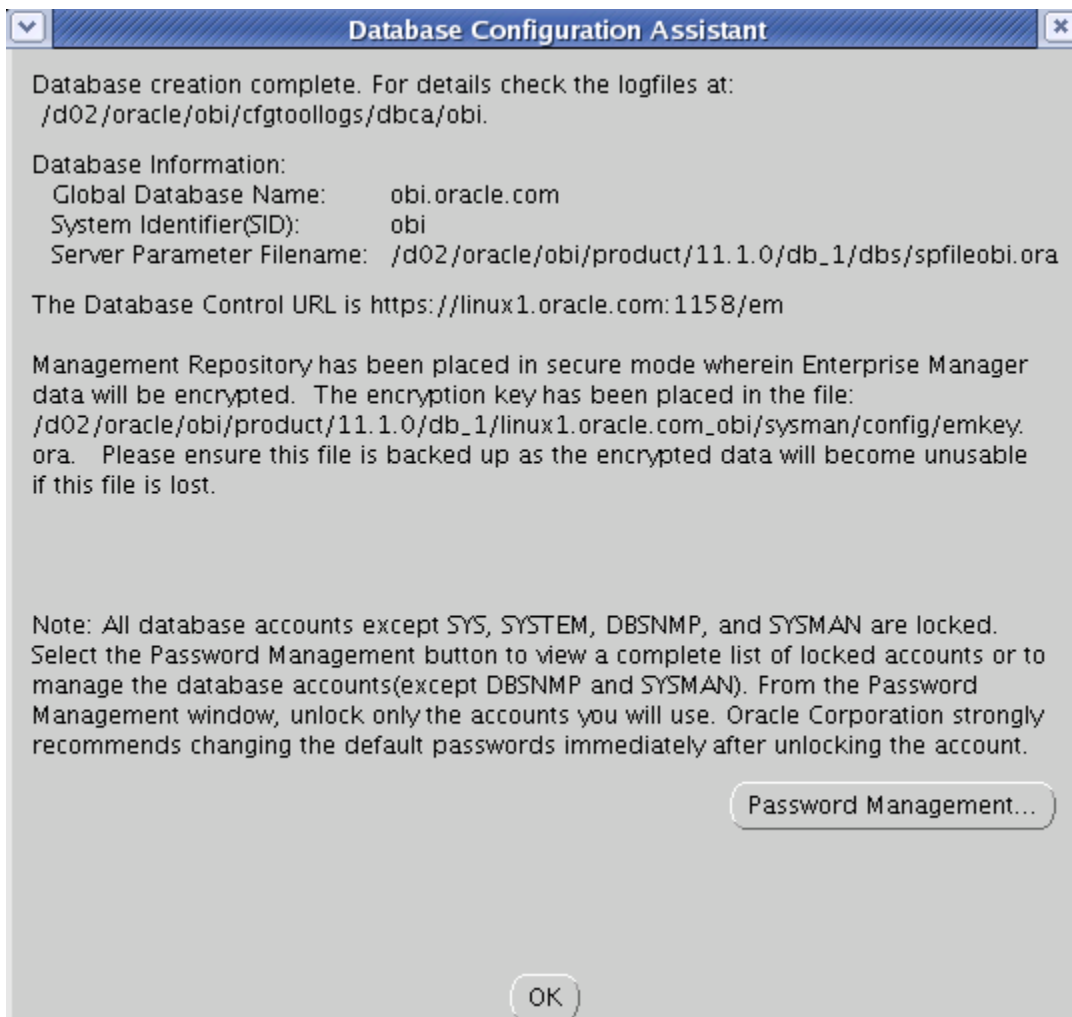
Author – A.Kishore
<http://www.appsdba.info>



Author – A.Kishore
<http://www.appsdba.info>



Author – *A.Kishore*
<http://www.appsdba.info>



Author – *A.Kishore*

<http://www.appsdba.info>

```
cat > obidb.env
ORACLE_HOME=/d02/oracle/obi/product/11.1.0/db_1
export ORACLE_HOME
PATH=$PATH:$ORACLE_HOME/bin
export PATH
ORACLE_BASE=/d02/oracle/obi; export ORACLE_BASE
ORACLE_SID=obi
export ORACLE_SID
NLS_LANG=American_America.UTF8; export NLS_LANG
export LD_LIBRARY_PATH=$ORACLE_HOME/lib32:/d02/oracle/obi/OracleBI/server/Bin
```

```
[obi@linux1 ~]$ . ./obidb.env
[obi@linux1 ~]$ sqlplus "/as sysdba"

SQL*Plus: Release 11.1.0.6.0 - Production on Mon Mar 21 16:42:14 2011

Copyright (c) 1982, 2007, Oracle. All rights reserved.

Connected to:
Oracle Database 11g Enterprise Edition Release 11.1.0.6.0 - Production
With the Partitioning, OLAP, Data Mining and Real Application Testing options
```