

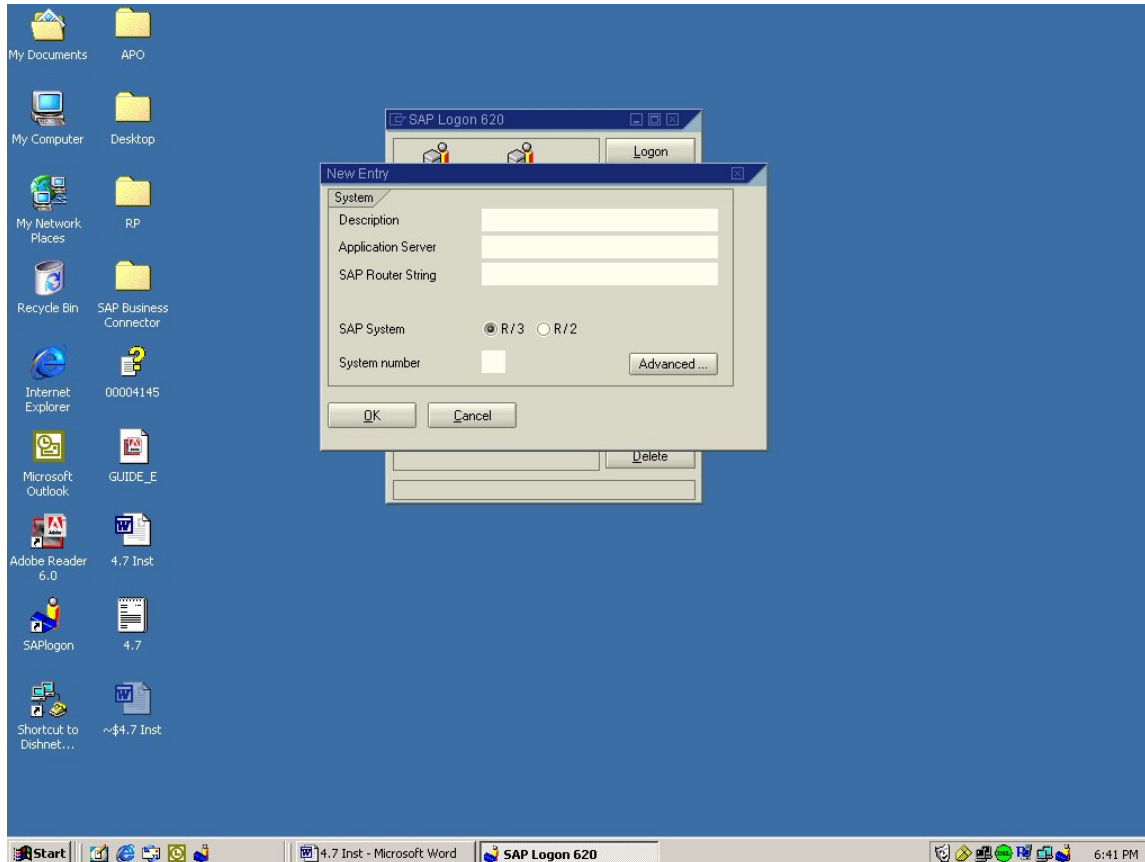
User Maintenance

Start the SAP Server

Desktop → SAP Management Console → SAP R/3 System → ERP →
Right Click on ERP and Click Start

Open SAP Logon

Click NEW



Give the Description ERP

Application Server Ippaddress of ur System Ex: 192.100.10.1

System Number :00

Click Ok

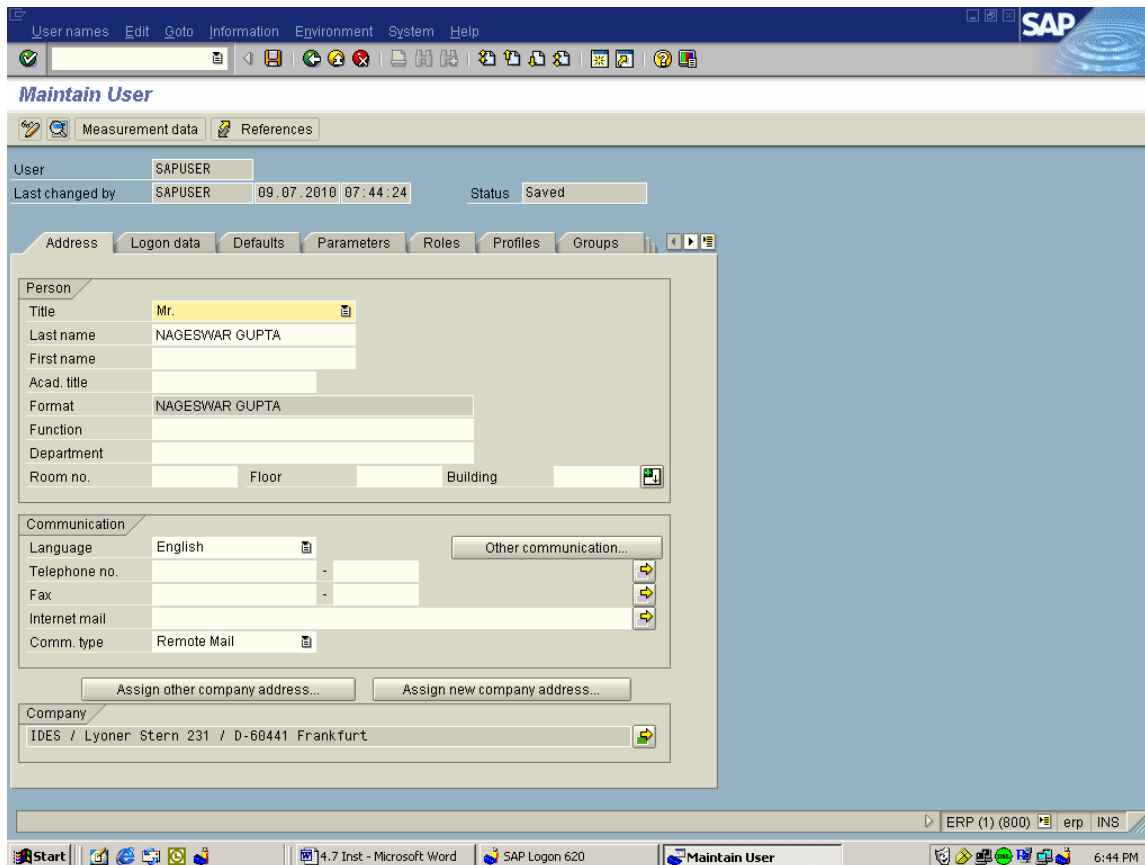
Log on to ERP

User name: SAP*
Password: 06071992

Type the T-Code SU01(User Maintance)

User Maintenance

Type SAPUSER in the Test Box and Click on NEW Button



This screen will open

Give th Title and Last Name

Click on Logon Data , Give th Initial Password(This Will be chaged in Next Logon)

Click on Profiels

Give the profiles Names SAP_ALL and SAP_NEW

Choose Save

Logout the SAP GUI

Do the Same for Both 000 and 800 Clients

Open the SAP Logonpad

Click ERP Logon

Source – *A.Kishore*
<http://appsdba.info>

User Maintenance

Logon as SAPUSER and Initial Password (What u was given at the time of user creation)

It will prompt u for the passwod

Type the T-Code SE38 (ABAP Workbentch)

Type any Program Name Choose Create
The program name should start with Z (Ex: Zsunil)

It will ask u for License Key

Save

Good Luck

Source – *A.Kishore*
<http://appsdba.info>

User Maintenance
