

Source – A.Kishore

<http://appsdba.info>

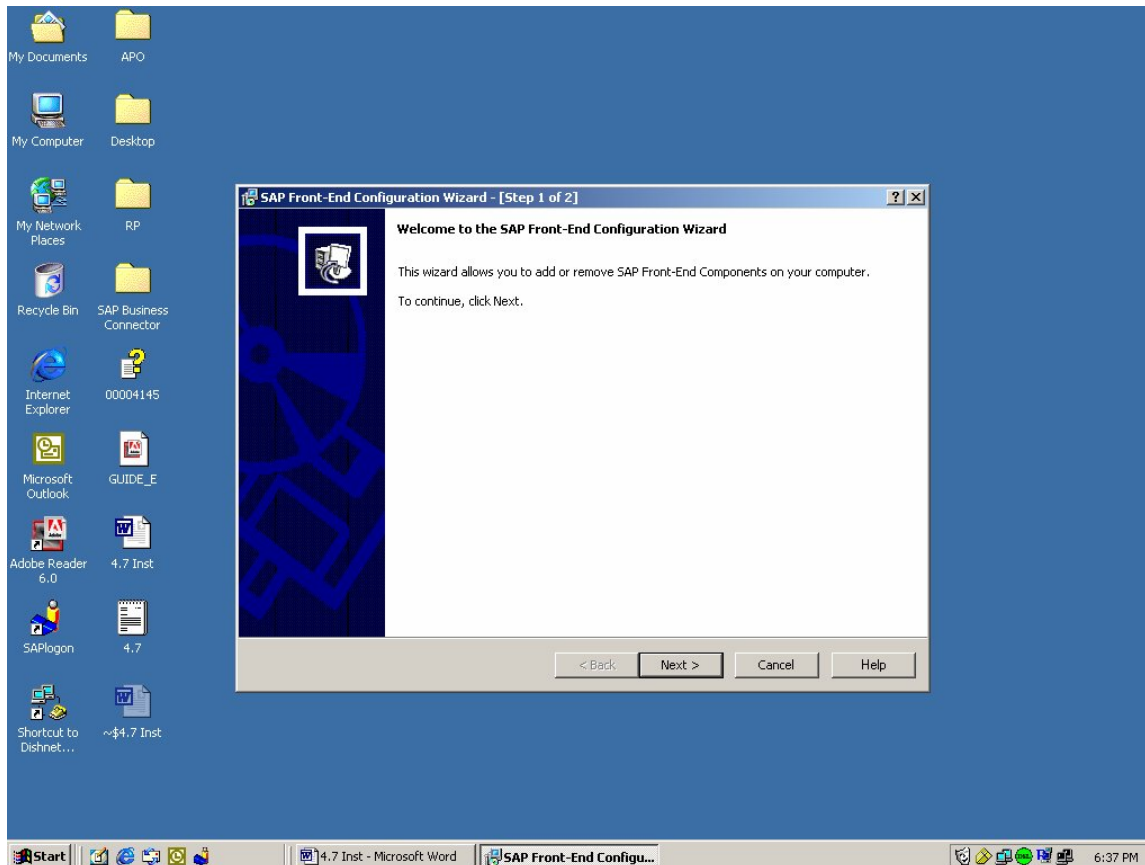
SAP 4.7 Installation Guide (Part-2)

Installation of front End

U have to Install the SAP GUI 6.20

Insert The CD

Click SETUP



Click Next

It will ask the path where u want to install

Click next

Select all the Components by clicking Select All Option (Right Side)

It will install the Gui Software

----- Finish-----

Stop the SAP Server

Desktop→ SAP Management Console→ SAP R/3 System→ ERP→

Right Click on ERP and Click Stop

The ERP Icon colour will be changed to GREY

Source – *A.Kishore*

<http://appsdba.info>

SAP 4.7 Installation Guide (Part-2)

RESTART THE SYSTEM