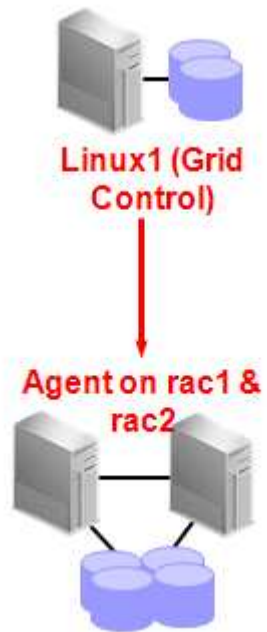


Author – A.Kishore
<http://www.appsdba.info>

1> Install Grid Control - linux1

2> Install Management Agent on both the nodes - rac1 & rac2



Author – A.Kishore

<http://www.appsdba.info>

Download grid control and agent from the below link

<http://www.oracle.com/technology/products/oem/index.html>

<http://www.oracle.com/technology/software/products/oem/htdocs/linuxsoft.html>

Oracle Enterprise Manager 10g Grid Control Release 4 (10.2.0.4) for Linux x86

Download the complete files

- ☐ [GridControl_10.2.0.4_LINUX.zip](#) (1,440,487,994 bytes) (cksum - 2874315604)

Directions

1. All files are in the .zip format. There is an unzip utility for this platform [here](#) if you need one.
2. Download all the zip files and unzip them into a same directory.
3. Review the [README](#) for this release
4. Installation guides and general Enterprise Manager 10g documentation can be found [here](#).

Mass Agent Deployment

- ☐ [Oracle Enterprise Manager 10g Grid Control Management Agent](#)
-

Author – A.Kishore
<http://www.appsdba.info>

1> Install Grid Control - linux1

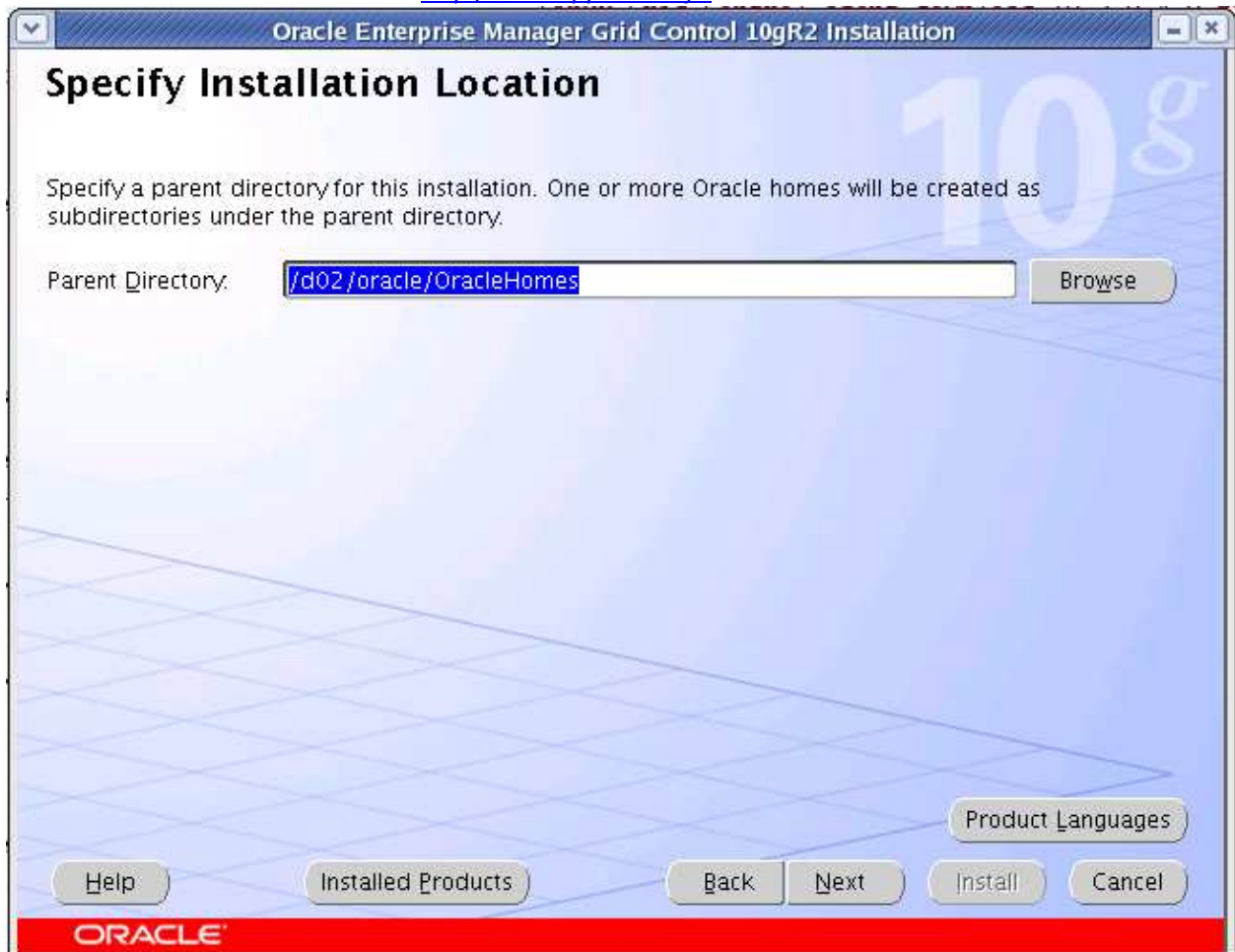
[GridControl_10.2.0.4_LINUX.zip](#)

unzip [GridControl_10.2.0.4_LINUX.zip](#)

./runInstaller



Author – A.Kishore
<http://www.appsdba.info>



Author – A.Kishore
<http://www.appsdba.info>

Oracle Universal Installer: Product-Specific Prerequisite Checks

Product-Specific Prerequisite Checks

The Installer verifies that your environment meets all of the minimum requirements for installing and configuring the products that you have chosen to install. You must manually verify and confirm the items that are flagged with warnings and items that require manual checks. For details about performing these checks, click the item and review the details in the box at the bottom of the window.

Check	Type	Status
Checking operating system package requirements ...	Automatic	<input checked="" type="checkbox"/> In progress...
Checking operating system requirements ...	Automatic	<input type="checkbox"/> Pending...
Checking whether required CLIRC installed on the system	Automatic	<input type="checkbox"/> Pending

Retry Stop

0%

Checking operating system package requirements ...

Help Installed Products... Back Next Install Cancel

ORACLE

Author – A.Kishore
<http://www.appsdba.info>

Oracle Universal Installer: Specify Configuration

Specify Configuration

Specify the configuration for the repository database that you are creating.

Configuration Details

Repository Database Name:

Repository Database File Location:

Groups Specification

SYSDBA and SYSOPER privileges are required to create a database using the operating system (OS) authentication. These are granted through membership in the UNIX groups OSDBA and OSOPER, respectively. Please specify the Unix groups of which you are a member, to be used for OSDBA and OSOPER.

Database Administrator (OSDBA) group:

Database Operator (OSOPER) group:

ORACLE

Author – A.Kishore
<http://www.appsdba.info>

Oracle Universal Installer: Specify Optional Configuration

Specify Optional Configuration

These parameters can be configured after installation through Enterprise Manager.

Configure **E**mail Notification
Provide parameters to receive emails on important events from Enterprise Manager.
E-mail Address: SMTP Server:

Configure **M**etalink
The following credentials enable access to Metalink to locate and download patches.
Username: Password:

Configure **P**roxy
The Proxy information enables the management service to communicate through a firewall when connecting to a management agent or to Oracle Metalink.

Proxy Server: Port:

Do Not Proxy For:

Proxy Username: Password: Realm:

Leave the username, password and realm blank if your Proxy Server requires no authentication

ORACLE

Author – A.Kishore
<http://www.appsdba.info>

Oracle Universal Installer: Specify Security Options

Specify Security Options

Management Service Security
This password must be supplied by agents desiring Secure Communication with the Management Service.

Password: Confirm Password:

Require Secure Communication for all agents

Repository Database Passwords

Use different passwords for these accounts

Username	Password	Confirm Password
SYS		
SYSTEM		
SYSMAN		
DBSNMP		

Use the same password for all accounts

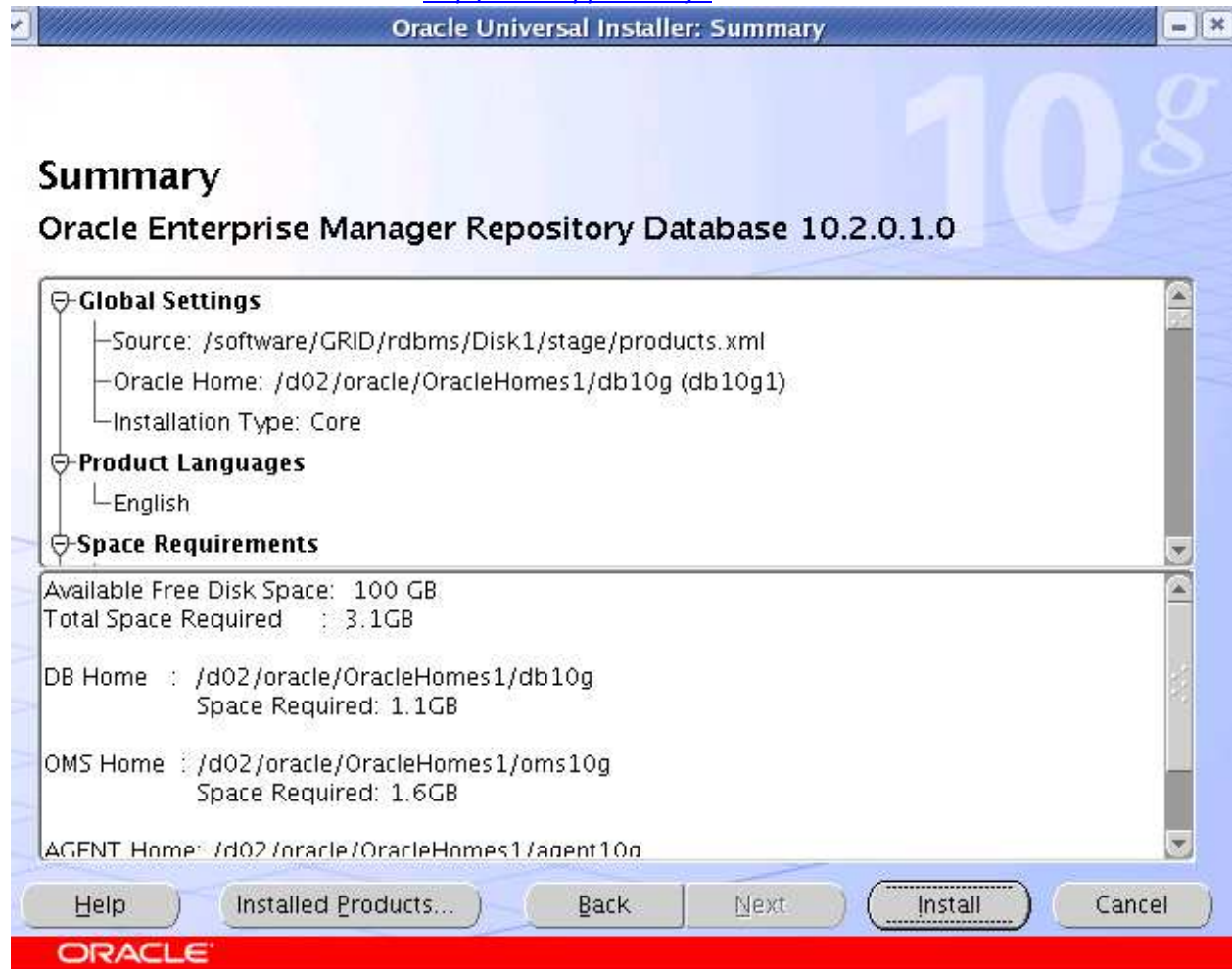
Password: Confirm Password:

Help Installed Products... Back Next Install Cancel

ORACLE

oracle10g

Author – A.Kishore
<http://www.appsdba.info>



start grid control

```
$ORACLE_HOME/opmn/bin/opmnctl startall
```

stop grid control

```
$ORACLE_HOME/opmn/bin/opmnctl stopall
```

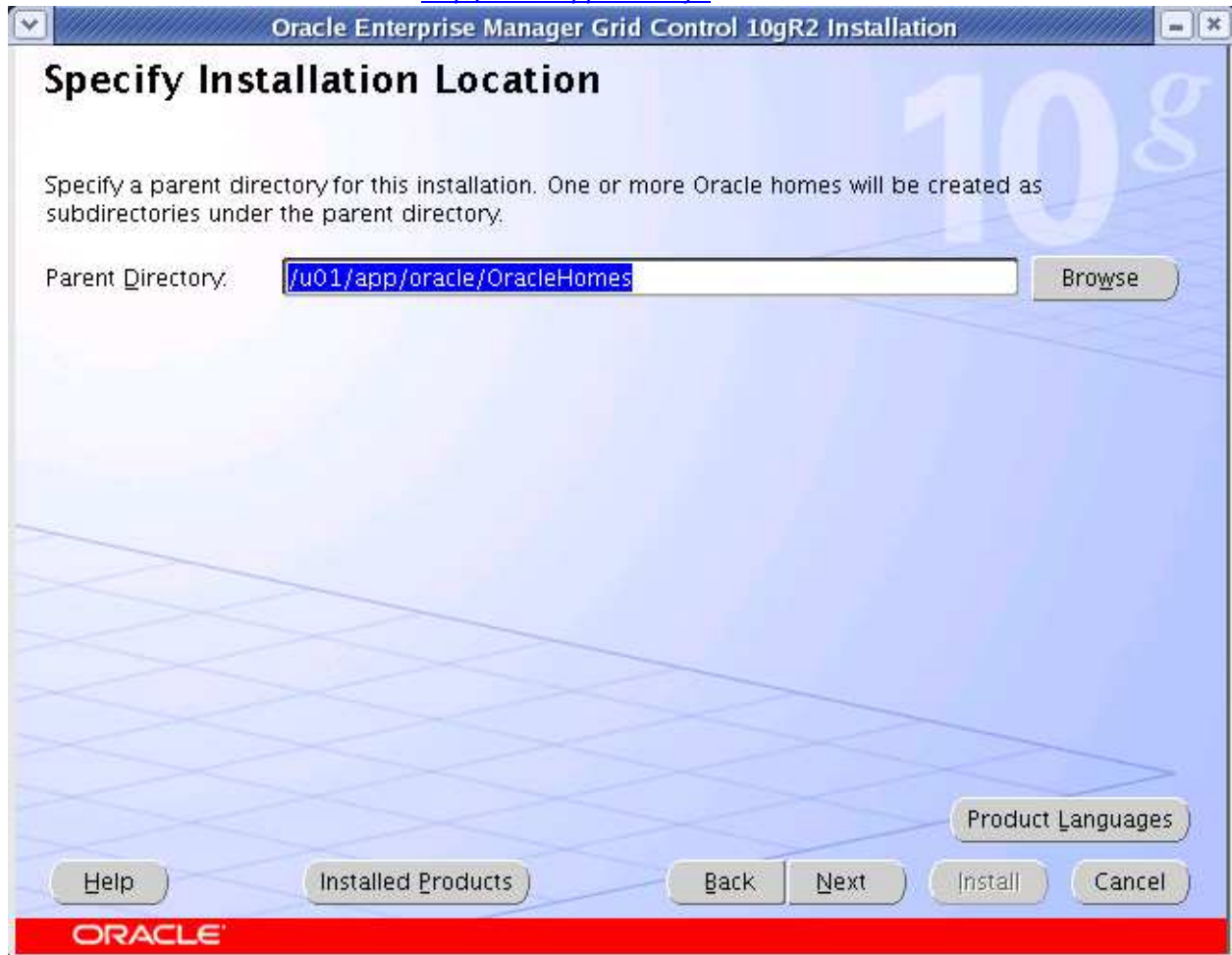
Author – A.Kishore
<http://www.appsdba.info>

Install Management Agent on all the nodes

./runInstaller



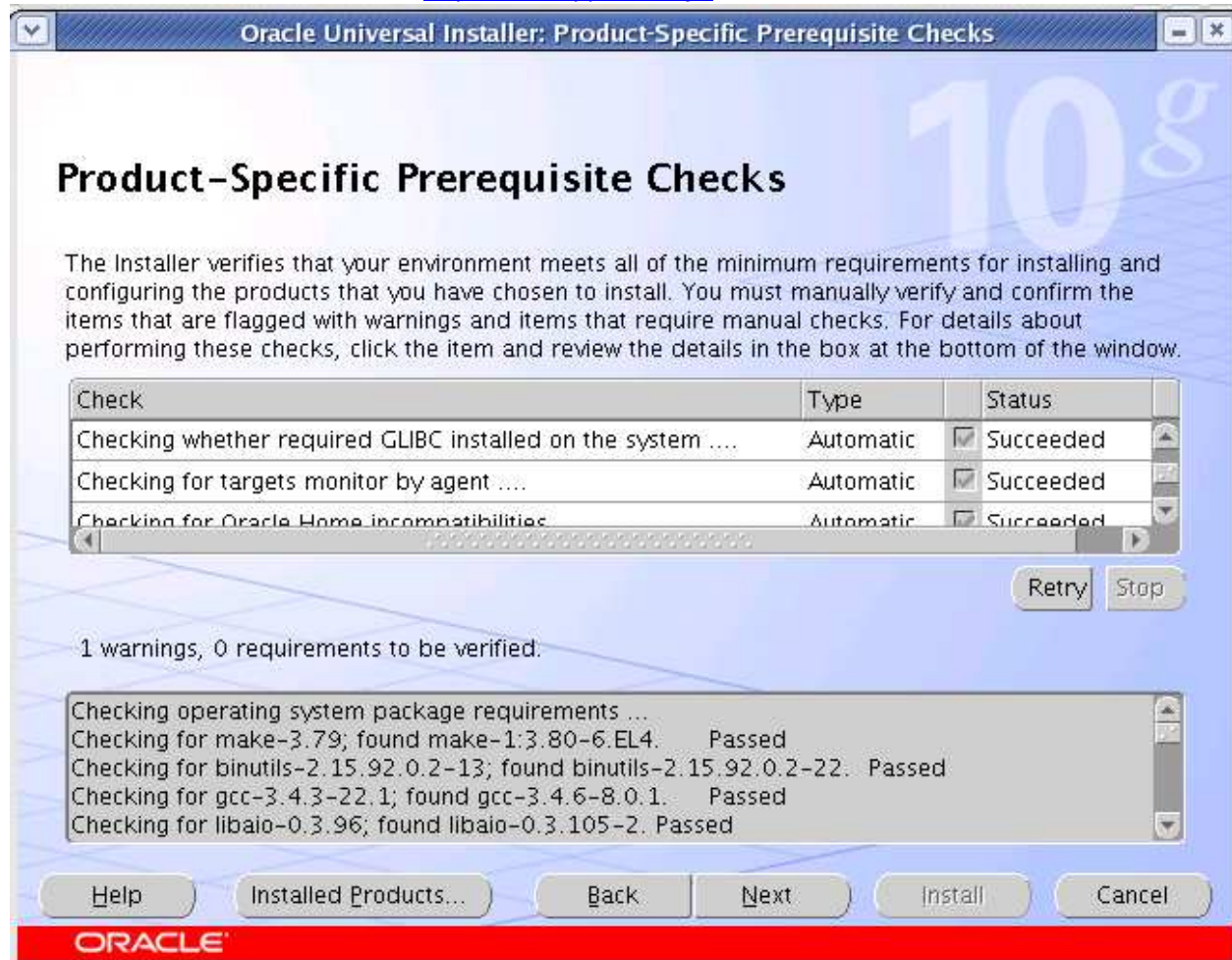
Author – A.Kishore
<http://www.appsdba.info>



Author – A.Kishore
<http://www.appsdba.info>



Author – A.Kishore
<http://www.appsdba.info>



Author – A.Kishore
<http://www.apssdba.info>

The screenshot shows a window titled "Oracle Universal Installer: Specify Oracle Management Service Location". The window has a blue background with a large "10g" watermark. The main heading is "Specify Oracle Management Service Location". Below the heading, there is a text prompt: "Provide the host name and port that this Management Agent will use to communicate with the Management Service." There are two input fields: "Management Service Host Name:" with the value "linux1.com" and "Management Service Port:" with the value "4889". At the bottom of the window, there are five buttons: "Help", "Installed Products...", "Back", "Next", and "Install". A red bar at the very bottom contains the "ORACLE" logo.

Oracle Universal Installer: Specify Oracle Management Service Location

Specify Oracle Management Service Location

Provide the host name and port that this Management Agent will use to communicate with the Management Service.

Management Service Host Name:

Management Service Port:

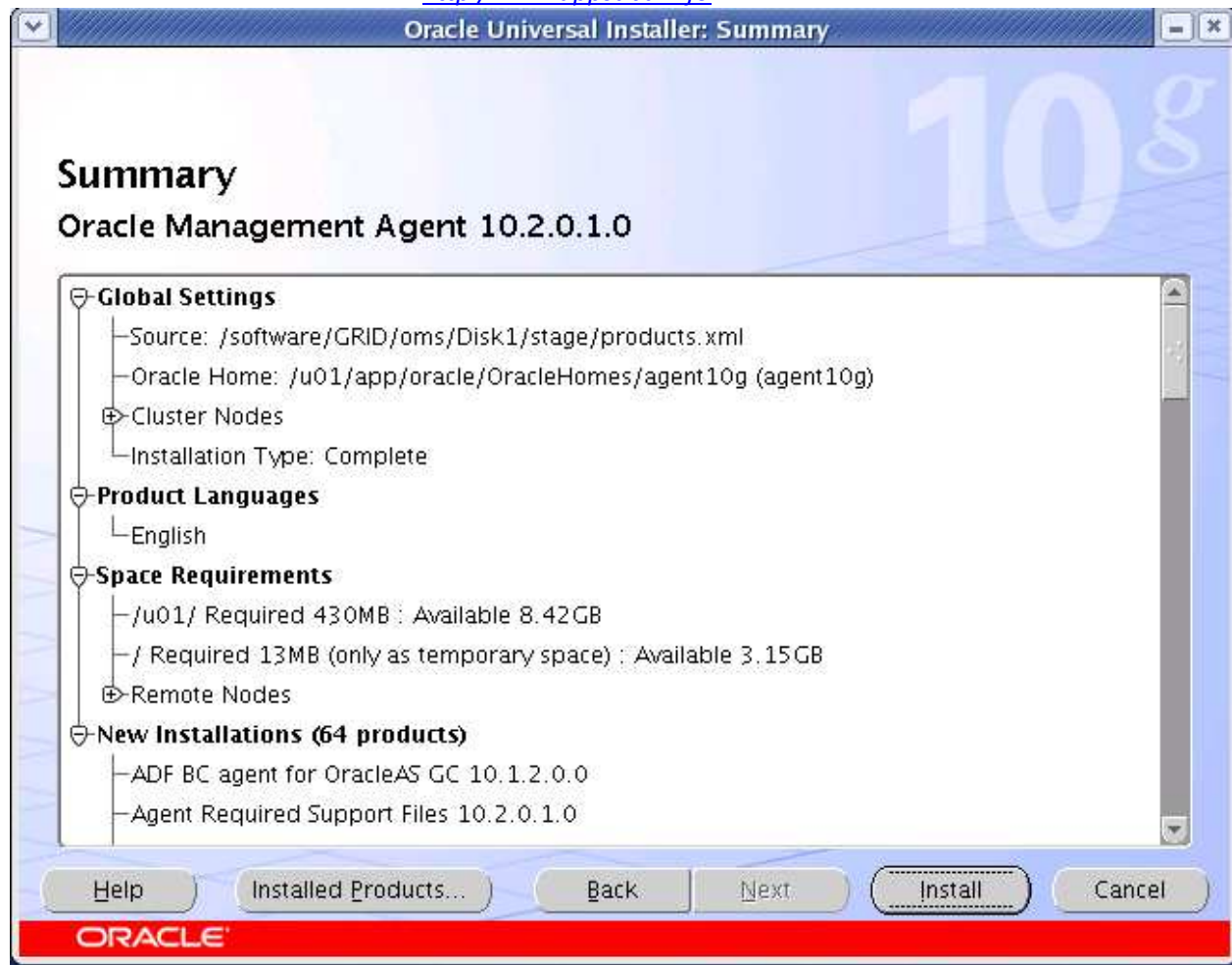
Help Installed Products... Back Next Install Cancel

ORACLE

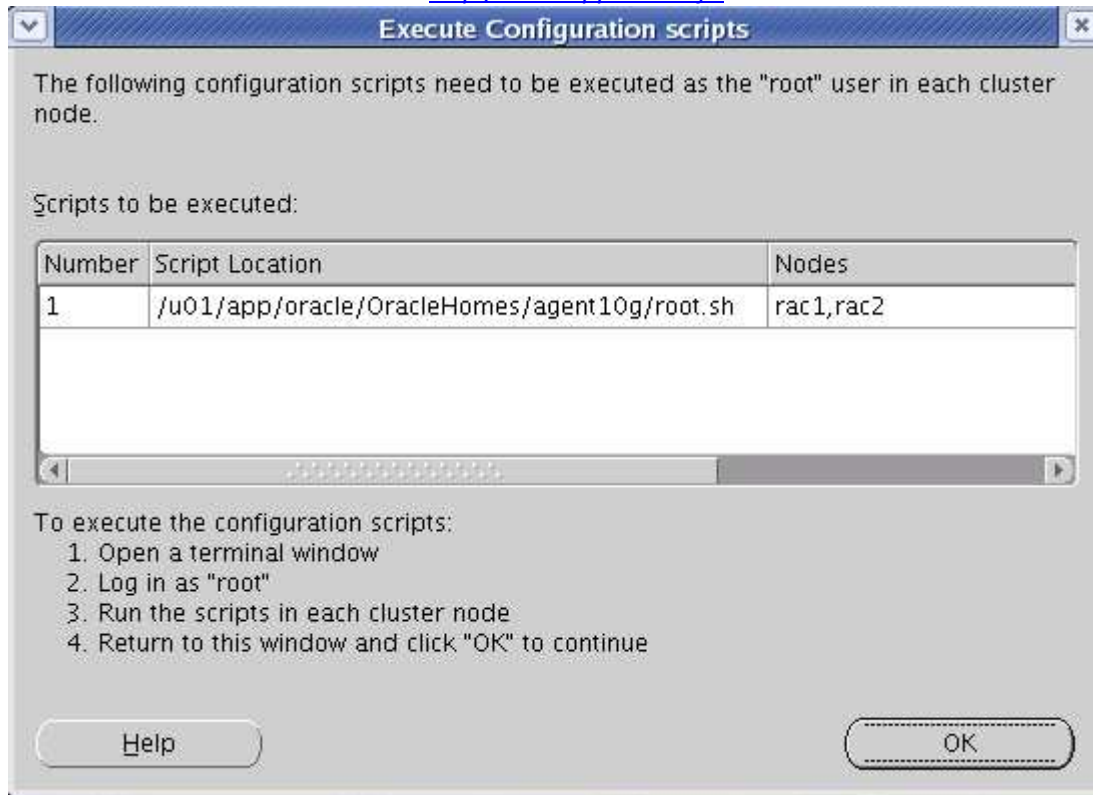
Author – A.Kishore
<http://www.appsdba.info>



Author – A.Kishore
<http://www.appsdba.info>



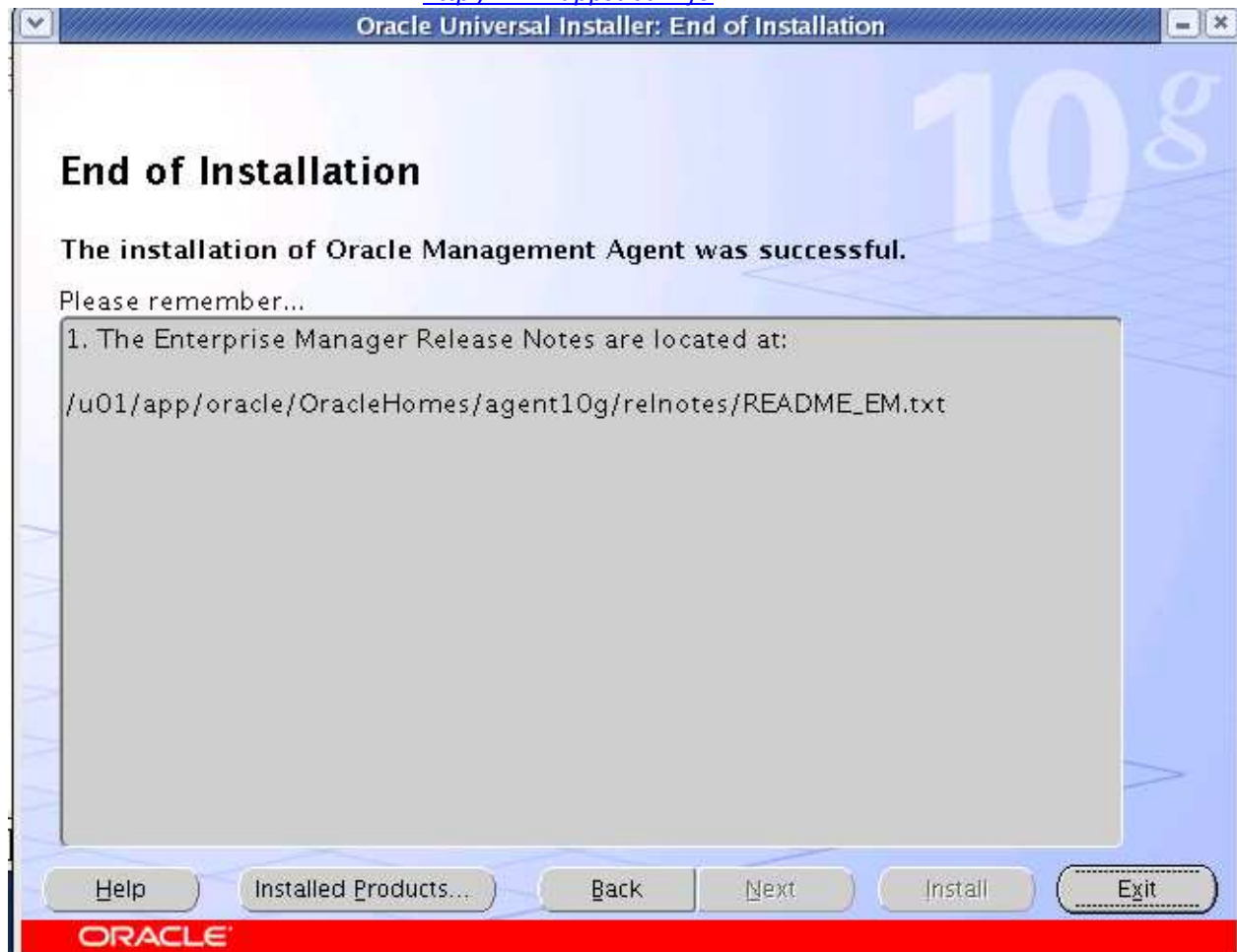
Author – A.Kishore
<http://www.appsdba.info>



Author – A.Kishore
<http://www.appsdba.info>



Author – A.Kishore
<http://www.appsdba.info>



Author – A.Kishore
<http://www.appsdba.info>

Start Agent

```
$ORACLE_HOME/agent10g/bin/emctl start agent
```

Stop Agent

```
$ORACLE_HOME/agent10g/bin/emctl stop agent
```

Connect to Grid Control

<http://linux1.com/4889/em>

sysman/oracle10g



Author – A.Kishore
<http://www.appsdba.info>

ORACLE Enterprise Manager 10g
Grid Control

Home Targets Deployments Alerts Policies Jobs Reports

Hosts | Databases | Application Servers | Web Applications | Services | Systems | Groups | All Targets

Hosts

Page Refreshed Oct 5, 2009 1:23:47 AM PDT

Search [Advanced Search](#)

|

Select	Name ▲	Status	Alerts	Policy Violations	Compliance Score (%)	CPU Util %	Mem Util %	Total IO/sec
<input checked="" type="radio"/>	linux1.com		2	5 2 0	70	99.88	99.82	143.7
<input type="radio"/>	rac1.com		1	5 1 0	76	46.31	97.02	36.02
<input type="radio"/>	rac2.com		0	5 0 0	75		95.52	

For further references:

http://www.idevelopment.info/data/Oracle/DBA_tips/Enterprise_Manager/OEM_10.shtml

http://www.idevelopment.info/data/Oracle/DBA_tips/Enterprise_Manager/OEM_12.shtml